

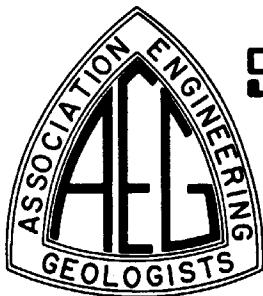
JAMES MILLER
Chairman - 595-6611

DON ASQUITH
Vice-Chairman - 340-9400

ALICE CAMPBELL
Treasurer - 413-3550

GARY GUACCI
Secretary - 413-3550

HUGH ROBERTSON
Editor - 456-1853



SOUTHERN CALIFORNIA SECTION

news letter

2550 BEVERLY BOULEVARD, LOS ANGELES, CALIFORNIA 90057

C/O KOVACS-BYER-ROBERTSON
22837 Pacific Coast Highway
Malibu, CA 90265

MARCH MEETING

DATE: **March 16, 1983 WEDNESDAY**

SPEAKERS: Board of Registration for Geologist and Geophysicists,
State of California

SUBJECT: The public and professional members of the BOARD will
be present to meet our Section members and answer our
questions. This informal get-together is to begin
with the social hour and dinner. After dinner, the
BOARD will accept questions from the masses in an
informal panel discussion.

PLACE: California Country Club
1509 South Workman Mill Road
City of Industry
(Thomas Guide Page 47, F-4)

Cost: \$12.00

RESERVATIONS: LeRoy Crandall & Assoc.
413-3550 Ext. 50 ask for Jan

TIME: 5:30 - Social Hour
6:30 - Dinner
7:30 - AEG Business
8:00 - Speaker
9:00 - Section Affairs
(if Scheduled)

RESERVATIONS are required by the proceeding FRIDAY at NOON
ALICE asks for your help.

NEWS OF MEMBERS

THOMAS W. DIBBLEE JR, formally with the U.S. Geological Survey, will be awarded the Presidential Volunteer Action Award by President Reagan on April 12 in Washington D.C. This award is being presented to TOM for his mapping of over 100 quadrangles in the Padres National Forest. TOM's career expands a half century of geological mapping. Congratulations!!

DICK BROWN and the SOUTH COAST GEOLOGICAL SOCIETY is trying to organize the printing, publication and distribution of TOM's mapping. DICK is eager to get AEG's support on this project.

GARY JOHNPEER recently left southern California to accept a position as Engineering Geologist for New Mexico Bureau of Mines and Mineral Resources in Socorro, New Mexico. In addition to public service work, his responsibilities will include siting studies for radioactive and toxic chemical waste disposal, research in hydrologic and tectonic controls on earth fissures and young fault scarps, and engineering studies in expanding urban-suburban areas of the state. GARY can now be reached at (505) 835-5808.

JOHN MERRILL, BRIAN ROBINSON, HUGH ROBERTSON, DON KOWALEWSKY and ART KEENE participated in an informal panel discussion sponsored by the Malibu Board of Realtors. Also present were representatives of the Los Angeles County Engineer. The topic of the February 15th meeting was "Smoothing Out the Geologic Review Process". The lively discussion may not have smoothed out the process any, but everyone got to express their opinions and enlighten the realtors and public attending. Hopefully the dialogue between the consultants and the reviewers will continue so the review process can be streamlined and improved so everyone benefits. Isn't that what it's all about???

WANTED-USED SOIL TEST EQUIPMENT

A L.A. geotechnical firm is looking for used soil test equipment (i.e. shear, consolidation machines, etc.). Interested sellers should contact Harry Audell at (213) 254-5257 or write to 815 Colorado Blvd. Suite 600, Los Angeles, Ca. 90041.

THOMAS BROS' FAULT

The following was sent in by MONTE RAY. Thomas Brothers Maps is publishing "Special REALTOR Editions" map books of 18 counties. Counties mapped include Los Angeles, Orange, Riverside, San Bernardino, San Diego, and Ventura. The maps will show the Alquist-Priolo Special Study Zones and flood plain zones established by the Federal Emergency Management Agency. They are available through the California Association of Realtors, Customer Services, 525 S. Virgil Ave., Los Angeles (213)739-8227.

FOOD FOR THOUGHT

"The lawsuit is the attorney's backhoe". Carlos Radobé

"If at first you don't succeed, you'll get a lot of advice".

"An expert is a man who will know tomorrow why the things he predicted yesterday didn't happen today."

"Only as you know yourself can your brain serve you as a sharp and efficient tool. Know your own failings, passions, and prejudices so you can separate them from what you see".

Bernard M. Baruch

"If we had no faults of our own, we should take less pleasure in noticing the faults of others".

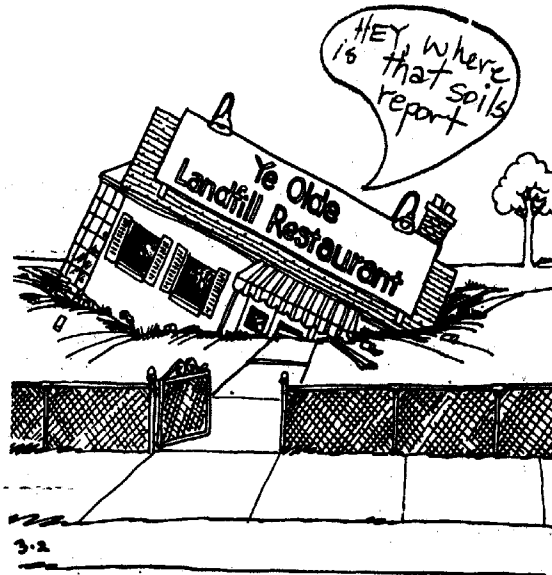
La Rochefoucauld

"You can't expect a man to see eye to eye with you when you're looking down on him".

FRIVOLITY

The Neighborhood By Jerry Van Amerongen

JERRY VAN AMERONGEN Copyright 1983 The Register and Tribune Syndicate, Inc.



Printed without
permission - L.A.
TIMES - sorry
Jerry

Hey gang - all this empty space is
going to waste - Please send written
items to your editor for your
newsletter.

GARY GUACCI
c/o LEROY CRANDALL & ASSOC.
711 North Alvarado St.
Los Angeles, CA 90026

SERVICE
AND SAFETY
SINCE 1971



U.S. POSTAGE


0.20

DB

2305 Norris Canyon Road
San Ramon, CA 94583
(415) 838-1961


JOHN LA VIOLETTE
Consulting Geologist

455 Sunset Street
Long Beach, CA 90805
(213) 428-3524



**EXPLORATORY DRILLING
AND
IN-SITU TESTING SERVICES**


251 TENNESSEE STREET
REDLANDS, CALIFORNIA 92373 (714) 793-6611

 **JEFFREY A. JOHNSON, INC.**
1213 Rimmer Avenue
Pacific Palisades, CA 90272
(213) 454-0987

CONSULTANTS IN APPLIED GEOLOGY AND SEISMOLOGY

- DESIGN RESPONSE SPECTRA
- TIME HISTORIES
- PROBABILITY STUDIES
- LIQUEFACTION STUDIES

P
R
O
F
E
S
S
I
O
N
A
L
S
E
R
V
I
C
E
S


 (213) 472-0282

DAVID J. LEEDS
ENGINEERING SEISMOLOGY
ENGINEERING GEOLOGY/GEOPHYSICS

Cert. Professional Geologist, AIPG
Reg. Geologist/Geophysicist, CA 11972 Chalon Road
Reg. Engineering Geologist, CA Los Angeles, CA 90049

**SOIL TECHNOLOGY:
A TECHNICIAN'S GUIDEBOOK**

WRITTEN BY AND AVAILABLE FROM:
TIM DAVIS
P.O. BOX 324
SAN RAMON, CA 94583
Price per copy- \$20.00, Ten or more- \$16.00
Send check or money order (no cash, please)

Robert Stone & Associates, Inc.
 Engineering Geology • Soil Engineering
Material Testing

MONTE E. RAY, C.E.G. 918
VICE PRESIDENT — CHIEF GEOLOGIST

8020 Deering Ave., Canoga Park, CA 91304 (213) 346-0665