

ASSOCIATION OF ENGINEERING GEOLOGISTS

Southern California Section

"Serving Professionals in Engineering, Environmental, and Groundwater
Geology Since 1957"

NEWSLETTER - JULY 1999

MONTHLY DINNER MEETING

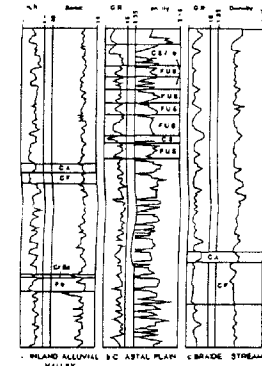
- Date:** Tuesday, July 13, 1999
- Location:** Stevens Steak House, 5332 Stevens Place, Commerce, CA
- Time:** Social Hour - 5:30 p.m. Dinner and Meeting - 6:30 p.m.
- Reservations:** Call (949) 253-5924 ext. 564
- Cost:** \$20.00 per person for reservations made by 12:00 noon Monday July 12, 25.00 at the door, and \$10.00 for students w/ valid i.d.). "No-shows" will be billed \$10.00.

SPEAKER: Bruce Schell, C.E.G.

TOPIC: "Perspectives on Fault and Seismic Hazards in the Los Angeles Basin Region."

Seismic hazards analysis in the Los Angeles region has been undergoing a rapid change the past few years. Ever since the 1987 Whittier earthquake was found to have occurred on an unrecognized subsurface fault below the Repetto Hills, we have been bombarded with the "discovery" of new faults, it seems almost monthly. This "fault du jour" mentality has resulted in an inventory of faults that already nearly exceeds the crustal strain budget for the Los Angeles basin and there are yet other undiscovered faults. Seismic hazards analysts have been faced with the problem of having their analyses being out of date by the time the studies get into print. Much of the geologic data suggest that many of the new buried faults may be dying features, but others are clearly active. Questions loom as to how to appropriately incorporate these faults into reasonable seismic hazards models. These and related issues will be presented.

Bruce A. Schell is an independent geologist with offices in Irvine, California with more than 25 years of experience providing geological consulting services to government agencies, geotechnical firms, private industry, and developers. Typical projects have included bridges, highways, tunnels, dams, power plants, port facilities, offshore facilities, pipelines, national-defense facilities, landfills, waste repositories, and residential developments. Services typically offered include evaluation of geology, geologic hazards (faults, landslides, volcanos), seismic hazards (earthquakes, liquefaction), environmental impacts, and site characterization. He specializes in fault and seismic hazards investigations and has published over 50 papers on both project-related work and independent research. Mr. Schell is a Registered Geologist and Certified Engineering Geologist in the state of California, and a member of the Geological Society of America, Seismological Society of America, and Association of Engineering Geologists.



OFFICERS

CHAIR

Wendy Schell
(949) 250-1421
schellbw@aol.com

VICE CHAIR

David Seymour
(714) 560-9016
dseymour@ch2m.com

TREASURER

Doug Santo
(562) 908-6205
dsanto@willdan.com

SECRETARY

Martin Lieurance
(805) 499-5035

CHAIR'S COLUMN

Where the heck is everybody? I am disappointed and frustrated by the pitiful turnout at last month's meeting. Dave Seymour, our Vice Chair, went to a lot of effort to get John Peck, the Past President of AEG, to fly in for the meeting and present an excellent talk on Yucca Mountain, and I went through considerable time and effort to locate a new venue in response to your requests for more meetings in Orange County. If everyone who requested the Orange County location in the member survey last year had shown up at last month's meeting, maybe we would not have made such a loss on the evening. Thank you to the regulars who showed up - it's very obvious that those of you who attended are loyal and faithful to the section, because for the first time in the last two years, everyone who made a reservation showed up. The member survey last year indicated that members want a meeting in the San Fernando Valley - can anyone tell me why I should bother to book at anywhere other than Steven's Steak House?

On a different front, our first AEG field trip in some time took place in mid-May. Unfortunately, I was out of town and unable to attend, however I have heard nothing but good things about the trip. A great big thank you to Kim Bishop for his efforts in organizing and leading this trip. If any member has an idea for our next trip or would be interested in leading or assisting with a trip, please contact Kim or myself. Another big thank you to Buzz Spellman who has single-handedly performed a great service to all Registered Geologists in the State of California. Buzz requested the State Office of Administrative Law (OAL) to determine whether the Fields of Expertise document issued by the Board of Registration for engineers and land surveyors, is a "regulation." The OAL determined that the document is a regulation and that it has no legal effect because it has not been adopted in compliance with the Administrative Procedure Act. The bottom line is that the much disputed document (which was rejected by the Board of Registration for Geologists and Geophysicists) has no legal standing in California (or any other state). This means it cannot be used by attorneys in legal cases or by regulatory agencies. I consider this a major victory and we have Buzz to thank for his time and effort in having this determination made. I hope Buzz will be able to elaborate on this issue at our next meeting. Applications are still being accepted for the Martin L. Stout Scholarship. This award is open to all student members of AEG and application forms may be obtained by e-mailing or mailing your request to me. So far several applications have been received, however none from the Southern California Section. If you know of any students who could benefit from this scholarship I encourage you to notify them and assist them in completing the application form. It's that time of year again. Nominations are now being accepted for officers of the Southern California Section. This is your chance to get involved and make a difference. The position of Chair is a two-year term and I am currently in my first year, so this position is not up for election, however the positions of Vice-Chair, Secretary, and Treasurer will be voted on. Nominations will be closed at the end of June. Nominations may be e-mailed, mailed, or phoned to me.

- Wendy Schell

COMPUTER CORNER

1) Los Angeles County Dept. of Public Works Web Site (<http://dpw.co.la.ca.us>)

The Los Angeles County Dept. of Public Works has placed their "Manual for Preparation of Geotechnical Reports" on their web site as a PDF file. The address is <http://dpw.co.la.ca.us/med/manual.pdf>, or you can go to <http://dpw.co.la.ca.us/services.cfm> and then click on "Manual for Preparation of Geotechnical Reports." Thank you to Charles Nestle for this recommendation.



2) Official California Legislative Information Web Site (<http://www.leginfo.ca.gov/index.html>)

The official web site for California legislative information maintained by the Legislative Counsel of California. The site has bill searching capabilities (both Assembly and Senate bills), subscription lists where you are automatically notified of changes in bill status/content, and Senate session schedule information. The site also includes Frequently Asked Questions, links to other Legislative WWW sites, and fully searchable California law (all 29 codes).



3) California Division of Mines and Geology Web site (<http://www.consrv.ca.gov/dmg/>)

This is the "virtual home" of the CDMG and of interest to all California geologists. Some of the site's features include downloadable .jpg- and .gif-format Seismic Hazard Maps for nearly 40 quadrangles in the L.A. metro area. Although the resolution of the downloaded maps is inferior to a hard-copy original, they're nevertheless free and a useful on-line resource. Other features include on-line versions of the four new and revised Official Maps of Alquist-Priolo Earthquake Fault Zones that were released to Ventura County and the cities of Camarillo, Moorpark, and Simi Valley on May 1, 1999.

ZIP-A-DIP

Combination protractor, scales and most efficient apparent dip calculator!

Only \$4.00 each, 2-10: \$3.50; 11+: \$3.00; 50+: \$2.50

Brochure describes ZIP-A-DIP and stratigraph.

PLEASE NOTE NEW ADDRESS BELOW!

Brochure only ___ ZIP-A-DIP quantity ___ total cost _____

Name _____

Address _____

To: ZIP-A-DIP, 3891 Ashford Dr. Eugene, OR 97405

DISTRIBUTOR FOR CHANCE® HELICAL PIER® UNDERPINNING SYSTEM AND THE STANLEY® COMPUTELEVEL™

THE ONLY ENGINEERED FOUNDATION SYSTEM LISTED WITH THE FOLLOWING:

Building Codes:

BOCA

Report No. 94-27

ICBO

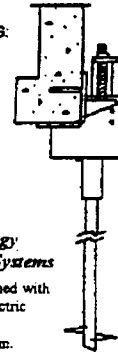
Report No. ER-5110

SBBCCI

Report No. 9504

Proven Helical Pier® Technology Now Used For Underpinning Systems

Foundation Stabilization is accomplished with an engineering technology used by electric utilities for decades: Helical screw anchor foundation system.



This Proven System Provides These Benefits:

- Significantly lower cost compared to other stabilizing methods.
- Measurable capacity during installation.
- Predictable results: known capacity in specific soils.
- No stress on structure during installation.
- Fast installation: minimal site preparation.
- Installs in limited access areas.
- Provides support for failing retaining walls.
- Can be utilized in emergency shoring situations.

For more information on product, or how you can become a certified Chance® installing contractor in your area contact:

ADVANCED SUPPORT TECHNOLOGY, INC.

(805) 250-1688

Serving Southern California

Solutions
Land
Water

Consulting Geohydrologist
Engineering Geologist
Water Quality Specialist

Sanford L. Werner

Registered Geologist
Certified Engineering Geologist

21031 Blythe Street, Canoga Park, CA 91304
(818) 998-8178

EMPLOYMENT OPPORTUNITIES

Engineering Geologist. CEG/RG required. Minimum 10 years experience in Southern California, experience with Fault Rupture Hazard Evaluations, Landslide Stabilization, Hillside Grading, and Geologic-Seismic Hazard evaluations required; experience with directing geology staff, project management, and managing geologic inspection projects desired. Please send resume to Martin B. Hudson, Ph.D., Law/Crandall Geotechnical Division, 200 Citadel Drive, Los Angeles, CA 90040.

Senior- and Project-Level Geotechnical/Soil Engineers and Project-Level Geologist. Growing southern California geotechnical and environmental consulting firm seeks senior and project-level geotechnical/soil engineers and project-level geologist in Camarillo (Ventura County) office. Minimum requirements: Senior Engineer: MSCE preferred, California PE/GE with a minimum of 10-15 years project experience, strong project management skills and leadership abilities. Project Engineer: BSCE (MSCE preferred), California PE with a minimum of 7 years experience. Project Geologist: BS/BA (MS/MA preferred), California CEG with a minimum of 6 years experience. All positions require strong oral/written communication and computer skills and the ability to work in a team environment. Mail/fax/email resume, salary history, refs to Bing Yen & Associates, Inc., 2310 East Ponderosa Drive, Suite 1, Camarillo, CA 93010. FAX: 805-383-0064, EMAIL: phipp49@atc-enviro.com. Equal Opportunity Employer.

Project Geologist. Ninyo & Moore's Geotechnical Division seeks Project Geologists (minimum 5 years experience) RG/CEG preferred. Please send resume to: Ninyo & Moore, 9272 Jeronimo Rd., Ste. 123A, Irvine, CA 92618 EOE

COMMITTEE CHAIRS

MEMBERSHIP

John Whitney
(714) 647-0277

LEGISLATIVE AND REGULATORY AFFAIRS

Dave Ebersold
(626) 568-6943
david.b.ebersold@mw.com
Mark Schluter
(626) 930-1223
Conversegp@aol.com

PUBLICATIONS

Dawn James
(805) 499-5035

FIELD TRIPS

Kim Bishop
(213) 343-2409
kbishop@calstatela.edu

SHORT COURSES

Sue Tanges
(619) 442-8022

EDUCATION

Ali Tabidian
(818) 677-2536

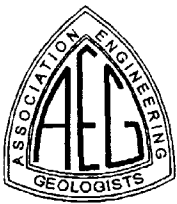
EDITOR

Stuart Michener
(310) 670-9221
Nsam@pacbell.net

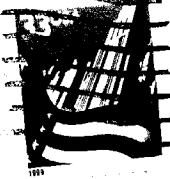
DEADLINE FOR AUGUST NEWSLETTER SUBMITTALS IS JULY 26TH.

MEMBERS IN THE NEWS

The Office of Statewide Health Planning and Development has appointed AEG - Southern California Section member **Bruce Schell** as the engineering geologist representative to the Hospital Building Safety Board for a four-year term.



Association of Engineering Geologists
Southern California Section



Stuart R. Michener
AEG Newsletter Editor
1669 Wilson Ave.
Arcadia, CA 91006



FIRST CLASS POSTAGE

D & Construction Specialties, Inc.

LIC. # 681416



"Specializing In Hillside Drilling & Tough Hand Excavations"

*** Test Pits/Test Borings**

*** Foundation Underpinning & Repair**

*** Caissions/Grade Beams**

*** Slope Repairs/Recompaction**

*** Demolition & Hauling**

Friendly & Professional Service

(818) 767-8864