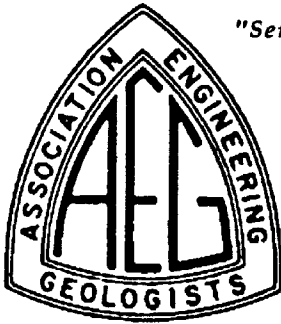


Association of Engineering Geologists

"Serving Professionals in Engineering, Environmental and Groundwater Geology Since 1957"



Southern California Section

NEWSLETTER - November 1997

SECTION OFFICERS

Chairman: David Ebersold
(818) 796-9141
dave.ebersold@us.mw.com

Vice Chair.: Thomas L. Slosson
(818) 376-6540

Treasurer: Wendy Schell
(714) 250-1421

Secretary: Martin Lieurance
(805) 499-5035

COMMITTEE CHAIRS

Membership: John Whitney
(714) 647-0277

Legislative & Regulatory Affairs:
Robert Hollingsworth
(818) 889-0844
grover15@ix.netcom.com

Field Trip: Kim Bishop
(213) 343-2409

Short Course: Sue Tanges
(619) 442-8022

Education: Ali Tabidian
CSUN — (818) 677-2536
atabidian@csun.edu

Publications: Rudy F. Ruberti
(818) 785-2158

AEG Newsletter Editor:

Linda L. Tandy
(213) 478-1329
1341 Hill Drive
Eagle Rock, CA 90041
e-mail: LASTRATA@aol.com

Deadline for submittals to the
December Newsletter:
November 20, 1997
Please submit via e-mail
or on disc and via snail mail

Dinner Meeting **TUESDAY NOVEMBER 11, 1997**

Airtel Plaza Hotel

7277 Valjean Avenue, Van Nuys, CA

Reservations (Reservations which are not canceled will be billed)

Call Nichole Harris at Montgomery Watson
(626) 568-6041

Please make reservations by Friday November 7, 1997

Cost \$25.00

- 5:30 Social Hour & One-half
- 7:00 Dinner
- 7:30 Announcements
- 7:45 Program

PROGRAM

TOPIC Use of Balanced Cross-sections to Determine Slip Plane Depth for Translational Landslides

SPEAKER Kim Bishop, Ph.D., P.E., C.E.G.
Assistant Professor, Department of Geological Sciences, California State University, Los Angeles

Directions to Airtel Hotel in Van Nuys

405 FREEWAY SOUTH (San Diego)

Exit Sherman Way, which exits onto Haskell Avenue. Make a left turn on Haskell and an immediate right turn onto Sherman Way.

Go approximately one mile to Valjean Avenue.

Turn right onto Valjean. Hotel on left.

405 FREEWAY NORTH (San Diego)

Exit Sherman Way - Reseda Exit. Proceed west onto Sherman Way. Go approximately one mile to Valjean Avenue. Turn right onto Valjean. Hotel on left.

Program Topic & Speaker

Use of Balanced Cross-sections to Determine Slip Plane Depth for Translational Landslides

Kim Bishop, Ph.D., P.E., C.E.G.
Assistant Professor, Department of Geological Sciences, California State University, Los Angeles

Kim Bishop is currently a professor of Geology at CSULA, where he teaches engineering and structural geology. He is also a California Certified Engineering Geologist and Registered Civil Engineer. Prior to his teaching position he worked for eight years in the consulting profession, first with GeoSoils, Inc. and then with Pacific Soils Engineering, Inc. He obtained a Ph.D. degree in Geology from USC in 1994.

The balanced cross-section method is a powerful, but apparently little-recognized tool for analyzing landslide slip plane depths. With the use of a few simple principles based on balanced cross-sections, the slip depth of some translational landslides can be determined for any cross-section by determining only two parameters - the displacement distance above the translational part of the slide and the cross-sectional area of the depression created at the head of the slide. The convenience of the method is that both of these parameters can be determined without subsurface exploration. Although the displacement in many (and probably most) practical cases cannot be measured directly, the value can be estimated using knowledge of the internal deformation of the slide. The method is useful because it can be used to support interpretations from subsurface exploration, for planning a subsurface exploration program, or to obtain an approximation of the slip surface depth where subsurface exploration is not practical.

Kelly's Bye

I'm thankful the year I committed doing the newsletter is over. It was both fun and a chore to satisfy my urge to contribute to you, the members of this section of AEG. This completed my third year of doing the newsletter, 1988 to 1990 and 1996 to 1997. I hope by example that other members will contribute their time and positive input to make themselves and the geological profession better in Southern California. Be certain I have not stopped helping AEG and would be interested in doing the newsletter again after a few years.

I would like to throw out the idea of completing another special publication on the status of engineering geology in Southern California in the year 2000. The last special publication was completed at the time of our 1992 - Long Beach annual meeting. The timing for us to pull it off seems good. It is a few years away and there are many recent and upcoming local projects that we should share with other professionals. Why don't you think about the subjects you would be interested in writing about for this special publication. We can discuss this at our monthly meetings and compose a committee to arrange the list of subjects and schedule for the publication. A classic in the making.

Linda Tandy has graciously agreed to take over the newsletter editor position for one year. As with all newsletter editors of the past and future she will have her own style of knocking these things out. It always helps to get printable material to the editor at least a couple of weeks before the next meeting. Otherwise the editor gets pressed unnecessarily to meet the deadline for mailout. Please give her a break. After all it is volunteer work!

Sincerely Kelly Rowe

PROFESSIONAL SERVICES



CONWEST
Subsurface Exploration Services

**GEOTECHNICAL AND ENVIRONMENTAL
DRILLING SERVICES**

CME-75 Auger Drill Rig

Geoprobe® Sampling Services

40-Hour Safety Trained Personnel

(6 2 6) 9 3 0 - 1 2 0 0
Monrovia, California

Chairman's Column

By David Ebersold

It was great to see such a large turnout from southern California at the Annual Meeting in Portland. Total meeting attendance was extremely good with a total of 575 registrations! There were a number of great field trips and the technical sessions were among the best that I have seen. In fact, it was hard to find a thing wrong with the Annual Meeting. Those of you who did not attend definitely missed out. Next year's meeting in Seattle promises to be exceptional too. While the meeting ended for most on Friday night, it continued through Sunday afternoon for the Board of Directors. A few highlights of the Board meeting included the adoption of a budget for the coming year, the fact that once again there is no dues increase, discussion of moving the annual meeting from fall to spring (no earlier than 2003), and active participation by the Association's new Executive Director, Norm Tilford.

One of the more controversial issues at the Annual Meeting was a session that was held to discuss the development of ASTM Standards for professional practice. ASTM currently has about 10,000 Standards on the books. While most of these apply to "how to make a widget" types of things, Standards are being developed with increasing frequency to deal with issues of professional practice, such as how to conduct a geologic investigation, how to perform a phase II subsurface investigation, etc. In fact, the E-50 committee which deals with environmental Standards currently has 100 Standards in the development process. Much of the concern regarding the development of professional standards centers around the meaning of the word "Standard". The fear is that use of the word "Standard" implies that it is "the" standard, that it dilutes the use of professional judgment, and that it subjects practitioners to liability if it is not followed to every last detail. In fact, some ASTM Standards are being written in to Federal legislation! Even if all of this seems OK to you, it is critical to further recognize that there is no QA/QC process for these Standards. In fact, once developed by the technical committees, there is no mechanism within ASTM to modify them, except by the committee which developed them. Further, ASTM cannot even institute a blanket statement for its Standards which clarifies what purpose they

are intended to serve or what their limitations are. Still not convinced? ASTM committee representatives stated that a Standard could be developed and adopted with just 5 or 6 vocal proponents! So much for the "Consensus approach" which is touted by ASTM. Want to know more? ASFE is the organization which is taking the lead on this issue, please contact them.

AEG Public Forum

By John Engler

AEG News Layout Coordinator
Web Site Designer

The Association of Engineering Geologists has set up a public forum for its members. The public forum is internet based and is run as a listserv by e-mail. This list is open to the public at-large and not just AEG members at this time. If this becomes a problem then AEG will change that at a later date.

If you wish to subscribe to this listserv you may do so by sending an e-mail to:

Listserv@listserv.tamu.edu

Put the following message in the BODY of the message:

SUBSCRIBE AEG-L First Name Last Name

Insert your first and last name where applicable.

CAREER OPPORTUNITIES

Immediate career opportunities for Engineers and Geologists at Lindmark Engineering, 314 Chatsworth Drive, San Fernando, California 91340. Successful applicants must have environmental experience and excellent writing ability.
Fax resume to (818) 365-0296.

PROFESSIONAL SERVICES

ZIP-A-DIP Combination protractor, scales and
most efficient apparent dip calculator

Only \$4.00 each, 2-10: \$3.50; 11+: \$3.00; 50+: \$2.50

Brochure describes ZIP-A-DIP, equal angle stereonet plotter, and stratigraph. PLEASE NOTE NEW ADDRESS BELOW!

Brochure only ZIP-A-DIP quantity total cost

Name _____

Address _____

To: ZIP-A-DIP, 3891 Ashford Dr. Eugene, OR 97405

Solutions
Land
Water

Consulting Geohydrologist
Engineering Geologist
Water Quality Specialist

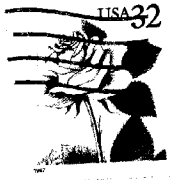
Sanford L. Werner

Registered Geologist
Certified Engineering Geologist

21031 Blythe St., Canoga Park, CA 91304 (818) 998-8178



Association of Engineering Geologists
Southern California Section



Linda L. Tandy
AEG Newsletter Editor
1341 Hill Drive
Eagle Rock, CA 90041



FIRST CLASS POSTAGE

D & Construction Specialties, Inc.
LIC. # 681416



"Specializing In Hillside Drilling & Tough Hand Excavations"

- * Test Pits/Test Borings
- * Foundation Underpinning & Repair
- * Caissions/Grade Beams
- * Slope Repairs/Recompaction
- * Demolition & Hauling

Friendly & Professional Service

(818) 767-8864