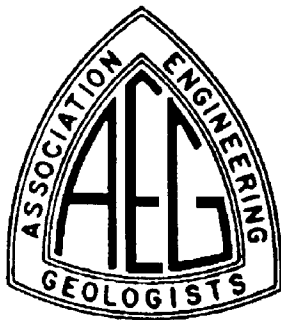


# Association of Engineering Geologists Southern California Section

## NEWSLETTER- December 1991



**Eldon Gath**  
Chairman  
(714) 860-7772 or  
(818) 965-4874

**Kelly E. Rowe**  
Vice Chairman  
(213) 436-9386

**James O'Tousa**  
Treasurer  
(818) 993-1211

**Tony Stirbys**  
Membership Chairman  
(213) 362-6176

**Terri S. Beehner**  
(714) 888-2422  
**Joseph Cota**  
(818) 785-2158  
Publications Chairmen

**Tania Gonzalez**  
Secretary/Newsletter Editor  
12 Issues/year-\$25 to "AEG"  
(Full-Time Students \$10/year)  
(714) 860-7772  
(714) 860-1089 FAX  
c/o Leighton & Associates  
1470 S. Valley Vista Dr. #150  
Diamond Bar, CA 91765

2550 Beverly Blvd.  
Los Angeles, CA 90057

### Dinner Meeting *Tuesday December 10th*

- The Quiet Cannon Restaurant  
901 North Via San Clemente  
Montebello
- Cost - \$20.00 (Full-Time Students - Free)
- Make reservations by Friday December 6th!!!**  
Leighton & Associates 714-860-7772  
(Leave Your Name & Number of People in Your Party)
- 5:30 Social Hour
- 6:45 Dinner
- 8:00 Program

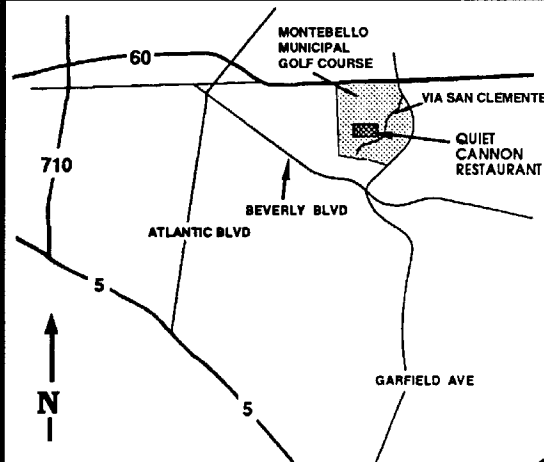
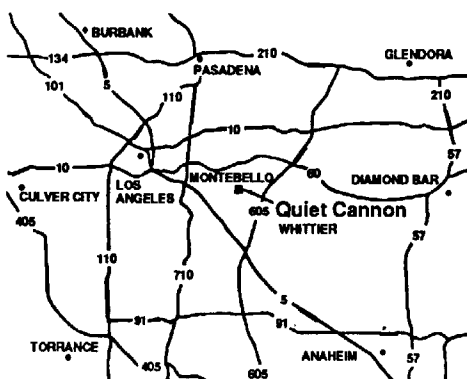
### Program

#### Update on the Metro Rail Project and Hazardous Waste Management Challenges by

**Anthony (Tony) Stirbys - Senior Engineering Geologist  
with Dames and Moore Consultants, Los Angeles  
and**

**Shala Craig, Ph.D., Environmental Supervisor with  
Parsons-Dillingham, Los Angeles**

#### MAP to Meeting



**PROGRAM**  
**Topic & Speakers**

**Update on the Metro Rail Project and  
Hazardous Waste Management Challenges**

by  
**Anthony Stirbys - Senior Engineering Geologist with  
Dames and Moore Consultants, and  
Shala Craig, Ph. D. - Environmental Supervisor with Parsons-Dillingham**

The Metro Rail Project is continuing to be constructed as a modern transportation element in the southern California area. Tunneling for the heavy rail portion of the Metro Rail System, the Red Line, was begun a few years ago. Since then, much progress has been made. A total of 4.4 miles of tunnels have been excavated and plans are set to begin to excavate the remaining 18.1 miles in January 1992.

The presentations at the meeting will provide an appreciation for where Metro Rail stands in its development from an interesting concept to a viable construction project. The presentation will also summarize some of the important technical developments experienced on the project, along the first segment, and review design and political issues leading to the commencement of excavation of Segment 2 which occurred late in 1991.

During the project several environmental problems have surfaced which have caused slight delays to construction and have brought forward some unique environmental solutions. For example, a recent issue related to the problem of treatment and disposal of excess ground water developed from the Metro Rail tunneling activities. The water contained high concentration of sulfide gases, pentachlorophenol and total dissolved solids. Some of the environmental issues related to the treatment and disposal of these waters are of interest and potential concern to other engineering projects in southern California.

Mr. Tony Stirbys has over fifteen years of experience in engineering geologic projects worldwide and has been working on the Metro Rail Project for over three years. He is currently the head of the Geotechnical Section of the Joint Venture Construction Management Team (Parsons-Dillingham-DeLeuw Cather) for the Los Angeles Metro Rail. His responsibilities include contract management and geotechnical supervisor of the tunneling exploration being undertaken beneath downtown Los Angeles. Most importantly, he is the current AEG Membership Chairman for the Southern California Section.

Shala Craig, Ph.D., is an environmental supervisor for the Metro Rail Project. Dr. Craig has over eighteen years of experience in engineering and environmental projects and has served as manager of environmental affairs on the Metro Rail Project for over four years. Her experience includes conducting remedial investigations/feasibility studies (RI/FSs) and remedial action plans (RAPs) for hazardous waste sites.

**PRESSURE**

**GROUT  
COMPANY**

**Steven C. Chandler**  
Grouting Engineer

125 South Linden Ave.  
So. San Francisco,  
CA 94080-6466  
415/871-2244  
FAX 415/761-2234

831 East D St.  
Wilmington  
CA 90744-6007  
213/513-0773  
FAX 213/513-0303

**SECTION COMMITTEE CHAIRS**

Professional Registration: Bob Hollingsworth (818) 889-0844  
Public Relations: Robert Ruff (714) 549-8921  
Legislative Affairs: Hugh Robertson (805) 373-0057  
Short Course: Dave Grover (818) 889-0844  
Field Trips: Robert Larson (818) 458-3979

## Southern California Section Dues

by Eldon Gath (Chairman)

Welcome to all of you to whom this newsletter is a new item. What it means is that you have been a member of the Association of Engineering Geologists, but not a member of the local Southern California Section. Last year, the Association voted to collect the section dues at the same time as the national dues are collected. That's what the \$25.00 extra dollars was for on your dues statement this year. Besides this monthly newsletter, what do you get for your money?

The Southern California Section is active in supporting the professional practice of engineering geology. We have a lobbyist in Sacramento who alerts us to pending legislation that has engineering geology implications. The lobbyist's efforts were instrumental in gaining us the necessary audience in Sacramento two years ago, when the entire geology registration act was in danger of being eliminated. Fees for the Sacramento lobbyist are apportioned between the San Francisco, Sacramento, and Southern California sections, with our portion of the cost supported by our member's dues.

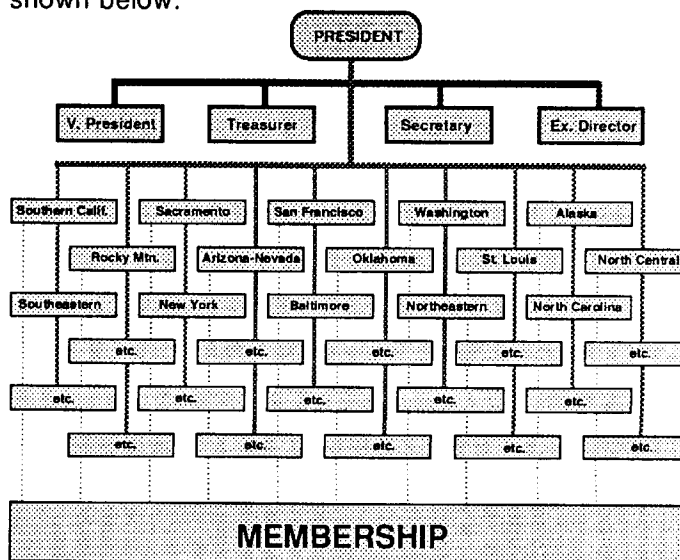
We are also active in engineering geology certification issues on the local level, most recently in Orange County, but a year before in Los Angeles County. We have a public affairs group that is beginning to introduce geology into the public school systems via science class presentations. We have a new membership class specifically for earth science teachers, and we sponsor students free to our meetings. We are reprinting many of our past publications that are still of value to the practicing engineering geology community. We are hosting the 1992 AEG Annual Meeting in Long Beach this coming October. We are actually doing a lot. Come and see, join us and help.

For those of you who are not members of the national Association of Engineering Geologists, you can still subscribe to this Southern California Section newsletter. However, please consider joining the Association. There are numerous membership classifications possible (Member, Associate, Affiliate, Student, Earth Science Teacher, and more), depending upon your experience level. In the coming year, we will be instituting some additional local benefits for being an AEG member, such as meeting, field trip, and publication discounts. Please think about it, talk to any of the current officers about the AEG, but especially, continue to attend the local meetings. We do appreciate your support of professional engineering geology practice, and your contribution to the Southern California section in this way. See you at the next meeting.

## Association of Engineering Geologists Reorganization

by Eldon Gath (Chairman)

The current structure of the Association consists of an Executive Council, composed of the President, V.P., Treasurer, and Secretary. The Executive Council is empowered to make the day to day decisions of the Association. The operational, organizational, and by-law decisions of the Association are the responsibility of the Board of Directors. The BOD is composed of the Executive Council officers, and all of the Section Chairs. The intent of the BOD was to bring the decision making responsibility as close to the membership as possible via their local Section Chair. This organizational chart is shown below:



### CURRENT ASSOCIATION ORGANIZATION

As you can see, there are a lot of people involved at the BOD level. As they also all report to the President, there is a clear bottleneck to the operation of an efficient organization. Aside from the number of people involved in a decision, one of the more troubling [to me] aspects of the BOD meetings is the rapid turnover in the Section Chairs, and their consequent lack of familiarity with the issues to be decided at a BOD meeting. Many of the debates center around concerns that have been discussed at previous meetings, and there is a lot of time being spent in bringing everyone "up to speed" on an issue. Since many of the issues before the BOD have major significance to the membership [National's collection of section dues, annual meeting locations, Bulletin, News, and Special Publications printing budgets, addition of new sections, membership requirements, etc.], it is imperative that the BOD be informed, and informed early enough to present the issues to their section membership.

Over the past six months, a committee composed of the Section Chairs of Washington, New England, Oklahoma, and Southern California, plus the Association

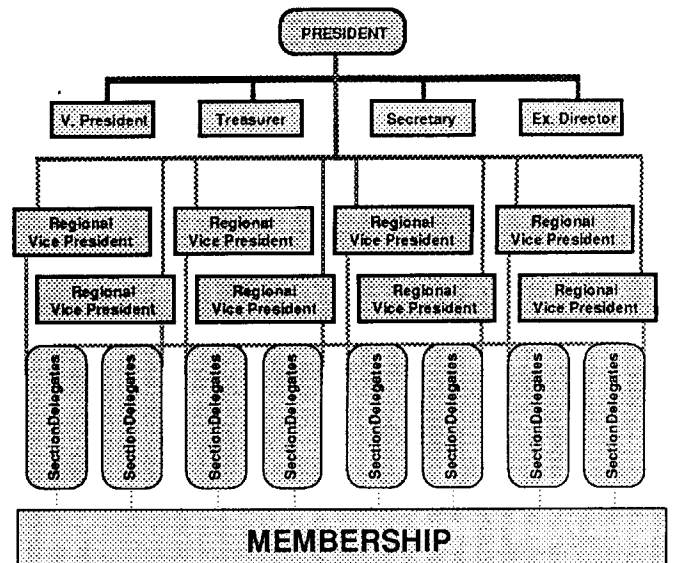
Treasurer was organized by the then Vice President Steve Garrison to more fully explore a proposed reorganization concept that he had drawn up. The plan would retain the Executive Council as is, but would significantly reduce the number of people at the Board of Directors meetings by introducing a new management level and position, a Regional Vice President (RVP), to replace the current Section Chairs at the BOD. RVP's would be selected by "Delegates", with each section getting one delegate per 50 members in the section. The Section Chair automatically becomes a delegate, and, if they were entitled to any, each section would select their own additional delegates. Delegates from the sections would be represented at the Annual Meeting at a "House of Delegates" meeting where they would learn about the Association business, and have the opportunity to speak towards that business.

Each RVP would represent approximately 400 AEG members at the BOD meeting. Currently a Section Chair represents their membership, be it 400 for Southern California or 25 for St. Louis, each gets one vote. The proposed revision is intended to accomplish at least six things:

- improve the efficiency of the BOD meetings by reducing the number of participants.
- improve the knowledge of issues by participants at the BOD meetings.
- eliminate the inequity in the membership representation of large sections.
- increase the number of people being involved in the Association.
- provide an avenue for continued involvement of past-section chairs.
- increase the speed of knowledge transfer down to the membership.

Whether this will all work remains to be seen. Having been on the subcommittee, I tend to like the plan. That does not mean it is perfect. It is particularly disconcerting for those sections with multiple sections within their region. For example, Sacramento may be represented at the BOD meetings by a RVP who is from the Alaska Section. There may be some communication problems with this system. There may be some inequities in representation. There may be some personality clashes as delegates wrangle over the RVP selection. The membership has effectively been lowered one additional layer in the voting structure. These are certainly issues to consider and be aware of as you consider this plan.

It was the opinion of the reorganization committee that these were issues that could be worked out. We felt it was important enough for the Association that it be brought to a vote at the next BOD meeting in April, 1992. If adopted at the BOD meeting, the issue will be brought to the full membership in November for a vote on the constitutional changes required to implement the plan. Please consider the issue carefully, it deserves it. 4



### PROPOSED ASSOCIATION REORGANIZATION

REGION 1 Vice President	REGION 2 Vice President	REGION 3 Vice President	REGION 4 Vice President
Southern Calif. 400 Members 8 Delegates	San Francisco 370 Members 7 Delegates	Sacramento 150 Members 3 Delegates  Washington 200 Members 4 Delegates  Alaska 30 Members 1 Delegate	Arizona 80 Members 2 Delegates  Utah 60 Members 1 Delegate  Rocky Mountain 100 Members 2 Delegates  Oklahoma 30 Members 1 Delegate

### TYPICAL SECTIONAL GROUPINGS FOR REGIONAL REPRESENTATION

#### 1992 Annual Field Trip

Rob Larson, field trip committee chairman, is making a call for volunteer(s) to lead next year's Southern California Section of AEG annual field trip. We would like to hold the field trip in the Temecula area, although this is not an absolute requirement. The volunteering leader should have a good knowledge of the geology of the area where the field trip is to be held. If anybody is interested, please call Rob Larson at (818) 458-

#### Field Trip Guidebooks for Sale !!!

Copies of the guidebooks for the Simi Valley (1991) and Soledad Basin (1990) field trips have finally being printed, and are now available for sale. A few other older field trip guidebooks have also been reprinted. You can purchase your copies at the regular AEG meetings, or by getting in touch with Joe Cota (c/o Geosoils, Inc., 6634 Valjean, Van Nuys 91406, (818) 785-2158).

## **News from Sacramento**

(contributions by Howard Spellman, President of the Board, and Ray Seiple, Legislation and Regulatory Affairs Chair, Sacramento Section)

The Board of Registration for Geologists and Geophysicists is sponsoring legislation to add the specialty certification of hydrogeologist to the Business and Professions Code. The legislation is intended to address industry needs to recognize the specialty of hydrogeology because it protects public health and safety. For example, hydrogeology is one of the wide range of disciplines involved in evaluation and remediation of toxic wastes in soil and groundwater.

It is the intent of the Board that this legislation meet the public need that hydrogeologists be certified in the State and that the practice of hydrogeology be regulated by the Board. This legislation is not intended to affect other professionals, such as engineering, soil sciences, and surface water hydrology, which also have important roles in addressing public health and safety. Also, this proposed legislation is not intended to affect the current work of geologists in fields other than hydrogeology, such as mining geology, petroleum geology, and engineering geology.

This proposed legislation was developed after the Board's Professional Practices Committee held public hearings in Northern and Southern California during 1991. The bill has considered the public input received at those hearings and all correspondence received through October 1991. Assemblyman Trice Harvey plans to introduce the bill early in 1992, after final approval by the Board.

Regulations to accompany the legislation will be formally developed later. Open hearings tentatively planned for late 1992 will allow for public input to finalize the regulations. Please direct any written questions or comments to Frank Gresse, Frank Dellechaie or Howard Spellman (State Board of Registration for Geologists and Geophysicists, 400 R Street, Suite 4060, Sacramento, California 95814). If you have any questions call Frank Dellechaie, Executive Officer of the Board at (916) 445-1920. Copies of the suggested wording for the proposed legislation are also available from the Board.

The outcome of the Board activities in certifying hydrogeologists will determine the actions of Assemblywoman Tanner, who has proposed AB 892. This bill proposes to change the name of the Board of Registration for Geologists and Geophysicists to the Board of Registration for Earth Scientists, and provides for the registration of hydrogeologists. Members of AEG and of the Board have testified in opposition to this bill before the Assembly Committee on Consumer Protection, Government Efficiency and Economic Development. The bill passed out of the Committee and Assembly, and is presently in the Senate Business and Professional Committee. No hearing date has been set for this bill.

Senate Bill 958 proposed by Senator Rogers amends the Surface Mining and Reclamation Act of 1975 by proposing to eliminate the option of using registered professionals to inspect mines for compliance with approved reclamation plans. The legislation chair opposed this bill before the Senate Natural Resources Committee. The bill failed to make it out of the committee and has been converted to a two year bill. This means the earliest it can be introduced is January of 1992. If the bills gets reintroduced, the Board will work closely with Senator Roger's staff and the Department of Conservation's staff to get the desired language into the bill.

The final draft of the understanding between the Registration Board for Engineers and the Registration Board for Geologists dealing with the interpretation of the Fields of Expertise document is expected to be accepted by both boards soon.

The Board of Registration has received approval for two staff positions to assist with enforcement and the examination process. Starting in 1993, the Board plans to hold two examinations each year if the number of examinees remains high. The fees for registration and certification will be increased.

On another issue, Orange County has decided not to change their Codes and will still require an Engineering Geology report on hillside developments signed by a certified engineering geologist.

## Positions Available

Ads in this section are welcome at no cost.

### Career Opportunity for an Associate Engineering Geologist

The California Division of Mines and Geology is receiving applications for the position of Associate Engineering Geologist. Requirements include two years of experience in California State service performing duties as an Engineering Geologist, Range B; or four years of engineering geological experience including two years of actual detailed field study applicable to the solution of ground water or civil engineering problems, and comparable in type and level to the work of an Engineering Geologist, Range B in the California State service (a master's degree with major work in geology or closely related field may be substituted for the non-specialized experience); and education level equivalent to graduation from college with major work in geology, engineering geology, or a closely related field. Applications are available and must be filed in person or by mail with:

**Department of Conservation**  
Personnel Office (LH)  
1416 Ninth Street, Room 1355  
Sacramento, California 95814

Applications must be postmarked no later than December 27, 1991.  
For more information regarding job openings and exams with the Department of Conservation, call (415) 327-2872.

### Career Opportunity for Mid-career Environmental Scientists and Engineers

with experience in one or more of the following:  
Soils and ground water assessment and remediation  
Site audit/compliance/permitting  
Hazardous materials management  
Professional registration a plus.

Excellent salaries and benefits commensurate with technical and managerial capabilities. Please submit resumes (in confidence) to:

**Ninyo & Moore**  
15375 Barranca Parkway, Suite A-101  
Irvine, CA 92718  
Attention: Dr. Peter R. Supka, General Manager

### The Geological Society of America Congressional Science Fellowship

Beginning September 1992, GSA will sponsor one earth scientist to serve a one-year term in the office of a Congressional committee or as a U.S. House or Senate member. The Fellow's responsibilities will be to advise on a wide range of scientific issues related to public policy. Fellows perform in much the same way as regular staff members; they have the opportunity to be involved in varied legislative, oversight and investigative activities. They offer their special knowledge, skills and competence for the opportunity to acquire experience and the chance to contribute to the formulation of national policy.

The program is open to highly qualified earth scientists in early or mid-career. The position will require the ability to work well with people from diverse professional backgrounds, and to be articulate and flexible in fulfilling a broad range of assignments. The fellowship carries with it a \$38,000 stipend, plus limited allowances for health insurance, travel and relocation. The program is funded by GSA and by a grant from the U.S. Geological Survey. The deadline for receiving applications for the fellowship is February 15, 1992. Procedures for application and detailed requirements are available in the geology departments of most colleges and universities in the United States, and upon request from:

**Executive Director, Geological Society of America,**  
P.O. Box 9140  
Boulder, Colorado 80301

### Career Opportunities for Mid-level Geotechnical an/or Environmental Geologists and Engineers

Converse Consultants, a leading geotechnical, Environmental and Materials Engineering firm in California is presently interviewing for Project and Senior level geologists and engineers for the Inland Empire office, located in San Bernardino, California.

The positions require a minimum of 4 to 5 years of individual or combined experience in the Geotechnical or Environmental Engineering consulting field. Applicants should have BS degree in geology, geohydrology, civil engineering or related discipline. Written and verbal communications are mandatory and registration is preferred (RG/CEG/RCE/GE). Qualified candidates should submit resumes in confidence to:

**Converse Consultants**  
630 E. Brier Drive, Suite 100  
San Bernardino, California 92408  
Attention: David Simon

## Professional Services

Business-sized card advertisements are \$50.00/year

### Mt. Eden Books and Bindery

Specializing in out-of-print and rare books in the GEOLOGICAL SCIENCES, including U.S.G.S. publications, general geology, mining, paleontology, geophysics, hydrology, mineralogy, etc. Free Search Service. For free catalog contact us at:

**P.O. Box 421, Dept. B**  
**Mt. Eden, California 94557**  
**(415) 782-7723**

### SANFORD L. WERNER

CONSULTING GEOHYDROLOGIST  
ENGINEERING GEOLOGIST  
WATER QUALITY SPECIALIST

Registered Geologist  
Certified Engineering Geologist

21031 Blythe St., Canoga Park, CA 91304, (818) 998-8178

## CHEMTEK i n c.

ENVIRONMENTAL  
LABORATORIES

D.O.H Certificate #1435

14140 Alondra Boulevard  
Suite A Santa Fe Springs  
California 90670

Telephone 213-926-9848  
Telefax 213-926-8324

### APPLIED ENVIRONMENTAL SERVICES, INC.

**Hazardous Waste Management**  
**Health & Safety**  
**Hydrogeology**  
**Site Characterization**  
• **Assessment / Remediation**

(714) 455-4080  
Fax (714) 455-2707  
23113 Plaza Pointe Dr., Ste. 100 • Laguna Hills, CA 92653

RICH DARBY

Lic. #519165



CO.  
EXCAVATION CO.  
DRILLING, LP

"WE DRILL & DIG HOLES."

TESTPITS/BORINGS, CAISSONS, FOOTINGS, FOUNDATIONS  
GRADEBEAMS, UNDERPINNINGS/PADS, SEEPAGE PITS

L.A. COUNTY:  
P.O. BOX 94656  
PASADENA, CA 91109-4656  
(818) 767-5293

ORANGE COUNTY:  
P.O. BOX 3241  
COSTA MESA, CA 92628-9998  
(714) 645-3127

An advertisement for your companies' goods or services in this publication will be seen by over 600 individuals, businesses and educational institutions every month. The current rate for a business-card sized advertisement is \$50.00 per year. For information about placing your advertisement, contact Tania Gonzalez at (714) 860-7772.

Please use the services of these members and businesses. Their advertisements help pay the publication costs of the newsletter.

## LOCAL PROFESSIONAL MEETINGS HELD REGULARLY

**Coast Geological Society:** Dinner meetings every third Tuesday of the month, October-June; American Legion Hall, 83 South Palm Street, Ventura.

**Inland Geological Society:** Dinner Meeting third Thursday of each month, San Bernardino County Museum, Orangetree, Redlands. Contact: Dave Goodrich @ (714) 225-4854.

**Los Angeles Basin Geological Society:** Lunch meetings third Thursday of every month; now at Luminarias Restaurant, Monterey Park.

**San Diego Association of Geologists:** Dinner meetings third Wednesday of every month - locations throughout San Diego area. Contact: (619) 292-8030 (Leighton & Assoc., San Diego office).

**San Joaquin Geological Society:** Dinner meeting second Tuesday of every month except July-September, American Legion Hall, 2020 "H" Street, Bak-ersfield.

**South Coast Geological Society:** Dinner meetings first Monday of each month, Revere House, 900 West First Street, Tustin.



Mary C. Stordal  
Laboratory Supervisor  
Analytical Chemistry Services

## CORE LABORATORIES

1250 East Pacifico  
Anaheim, California 92805  
(714) 937-1094  
Fax: (714) 937-1170

## Seminars/Meetings/Field Trips

### FEBRUARY 1992

**10-14 Sixth International Symposium on Landslides**, in Christchurch, New Zealand. The symposium is co-sponsored by the International Society for Soil Mechanics and Foundation Engineers, and the International Association of Engineering Geologists. **CONTACT:** David H. Bell, Geology Department, University of Canterbury, Christchurch, New Zealand, Phone: (64-3) 642-717 or 677-001. FAX: (64-3) 642-999.

**18-21 Earth Remote Sensing Short Course**, in Los Angeles, presented by the Department of Business, Engineering and Management of the UCLA Extension Program. **CONTACT:** For technical information: David L. Glackin at (213) 336-8735, for registration information: Short Course Program Office at (213) 825-3344.

### APRIL 1992

**29-May 1 1992 Pacific Section Convention AAPG-SEPM-SEG-EMD**, in Sacramento, California. Theme for the convention is "Creative Approaches to Environmentally Sound Exploration". **CONTACT:** Rich Boyd, General Chairman, Capitol Oil Corporation, 1545 River Park Drive, #501, Sacramento, CA 95815, (916) 929-4141.

### June 1992

**15-1 Remote Sensing for Marine and Coastal Environments: Needs and solutions for pollution monitoring, control, and abatement**, New Orleans, Louisiana. **Call for papers**, abstracts due February 3. **CONTACT:** Dr. Robert H. Rogers, ERIM/Marine Environment Conference, P.O. Box 134001, Ann Arbor, MI 48113-4001, (313) 994-1200 ext. 3234.

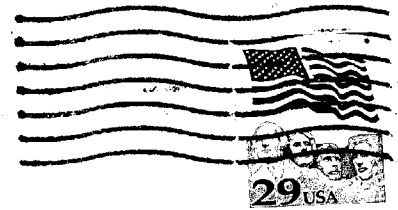
**HEY - SUPPORT YOUR  
ASSOCIATION !!!!!**

The Southern California Chapter of AEG (that's us) is hosting the 1992 National Meeting. To assure a successful and measurable meeting, we (that's us) need sponsor contributions (\$\$\$) from the local geotechnical consulting community (that's you). Please call Greg Rzonca at Converse Consultants, Pasadena Office, (818-440-0800) for further information.

We thank you.

*EM*  
**HAPPY HOLIDAYS !!!!!**

Tania Gonzalez  
AEG Secretary/Newsletter Editor  
c/o Leighton & Assoc.  
1470 S. Valley Vista Dr., #150  
Diamond Bar, CA 91765



**FIRST CLASS POSTAGE**

