



ASSOCIATION OF ENVIRONMENTAL & ENGINEERING GEOLOGISTS
Southern California Section
"Connecting Professionals, Practice, and the Public."

NEWSLETTER – 1st Quarter 2015

Officers

Chair – Shant Minas, shant@aessoil.com, 818-245-0406
Vice Chair – Darrin Hasham, DHasham@kleinfelder.com
Treasurer – Edmond Lee, Edmond@geoconceptsinc.com
Secretary – Pedram Rahimikian, pedram@geoconceptsinc.com
Membership Chair- Dave Perry david.perry@amecfw.com

Visit the Southern California Section Website: www.aegsc.org

Newsletter Editor – Pedram Rahimikian, pedram@geoconceptsinc.com

Our meeting next month is on Tuesday, March 10, at Cisco's in Westlake Village. We will be welcoming Desmond Chung of GeoBrugg, who will be talking about debris flow mitigation tools and techniques.

****** Greetings, AEG members! Scroll down for a Message from your incoming Chair, Shant Minas, as well as a brief update from recent Chair, Dave Perry. We hope to see you in March. Please read the important announcements in this newsletter for upcoming activities. ******

Chair's Column

By Shant Minas

February 20, 2015

Greetings, fellow members of the Association of Environmental and Engineering Geologists, southern California! As your incoming Chair for the 2015-16 year, I want to reach out and talk about a few things, and also to restart the Quarterly Newsletter.

First, let me tell you a bit about myself. My path to becoming an engineering geologist is rather unconventional compared to most of you. After a stint in the US Army, I started college with ideas of becoming an economist. But by the time I was in my senior year at USC, I was having doubts about a career in the "dismal science." My instructors suggested I enroll in the Masters in financial mathematics program at USC, since I was "good at math" for an econ student, and this field was thought to be lucrative and up-and-coming. So I did that; and soon I found myself competing with math PhD candidates from Europe and Asia. I stuck it through, not least because USC luckily gave me a sweetheart Teaching Assistantship which paid for school and put some money in my pocket. By the time I finished up in 2003 I was in the job hunt for a quant-finance job, which would have likely taken me to NYC or Chicago. I didn't much like this field of work though; and wasn't terribly excited to sit behind a desk and crunch numbers all day for a bank. And my father Caro, a geotechnical engineer, had other plans for me; he asked me to help him out at his consulting firm while looking for work.

So began my career at Applied Earth Sciences, a geotechnical consulting firm he started in 1985. I first got involved with project management, environmental reports and methane testing. I liked being outdoors, and the analytical and creative component to each project. After two years, when I decided I liked this field of work, I enrolled in CSULA's graduate program in geology, with Kim Bishop and Barry Hibbs as mentors. As part of my coursework I took part in two international geology field studies courses with the South Dakota School of Mines, one in Turkey in 2008 and an environmental studies program in India in 2009. Besides my work as a geologist at AES, I have consulted independently, and I started my own firm Arroyo Geoscience in 2012. By now I have merged all of my independent work back into AES.

And after a tough stretch from 2008 through 2011, as we all experienced, things are moving again, and we are feeling good about the future.

My first involvement with AEG was when I was in graduate school at CSULA, I volunteered at the 2007 Annual Meeting in Los Angeles. After I graduated in 2008, and when the BGG was in the process of being merged with the BPELS, I started taking part in the SoCal section. My first assignment was as Newsletter Editor. Over the years I became Treasurer, Vice-Chair, and now Chair. It's been a fun and educational ride!

As Chair I plan to expand our membership pool to include some old-timers who used to come but have dropped off; mid-level consultants who consider themselves too busy to take part, and students and recent graduates, professors and academicians as well. We want to attract more environmental professionals as well, partly by inviting more speakers with mixed engineering and environmental backgrounds, and "put paid" to the Environmental in AEG. We have also planned a field trip along the Hollywood and Santa Monica faults; tentative scheduled date is Saturday, June 13, 2015. More on this below.

My Recent Visit to Sacramento

On February 19, I had the opportunity to visit Sacramento and meet our lobbyist, Ms. Judy Wolen, and Chairpersons of the San Francisco Bay Area and Sacramento Sections, Ms. Sarah Kalika and Mr. Peter Holland, respectively, and also the Sacramento Legislative Committee Chair Mr. Bill Fraser. It was a unique experience to meet and discuss issues pertaining to our professional practice with assembly member staffers. We represented a good cross section of California geologists with unique professional backgrounds.



(From left to right: Sarah Kalika, San Francisco-Bay Area Chair; Shant Minas, southern California Chair; Peter Holland, Sacramento Chair; and Bill Fraser, Sacramento Legislative Committee Chair)

Currently, one of the main issues, with respect to the Sunset Review Board coming up in March, is the Geophysicist license. According to the documentation provided by the BPELSG Board, it costs roughly \$20,000 per examinee to administer the exam. And the usefulness of this license, with respect to the cost of maintaining it, is being called into question. They also do not have any volunteers to help write the new exams; so the Board wants to do away with the Geophysicist license altogether. It is a tough issue, because we want to support our fellow geophysicists, but at the same time, it appears increasingly impractical to do so.

The other issue we will be discussing is the merger of our accounts with the general BPELS account. When the Boards were merged, the BGG account was kept separate, with the understanding that they would eventually merge. Currently, all other operations between Boards have merged and there is a call to merge the accounts at this time.

Personally, I would not be for it if the BGG account was substantial, but in comparison, our BGG reserve funds are dropping due to fewer licensees and candidates taking the exams. We

would like to get your opinions on these matters so we will be discussing them at our next meeting at Cisco's in March; see below.

Landslide Symposium Feb 26-28

AEG is hosting a Landslide Symposium in Seattle, next weekend, Feb 26-28, in Seattle, hosted at the University of Washington. If you hurry there is still time to register! It should be a great discussion on Landslides and possibly some perspective on landslide hazards from the insurance industry. Several prominent southern California AEG members will be giving talks and leading discussions; an optional field trip to the Oso Landslide is also scheduled. If you work in landslide hazard mitigation this conference is a must. I will be attending myself, and am quite looking forward to it. Visit the website, <http://www.aegweb.org/about-aeg/aeg-meetings-events/2015-landslide-forum> for details to register.

Distinguished Speakers through May

We have lined up a talented and professionally diverse mix of speakers from now through May 2015. Our first two meetings of the year went great; in January we had incoming AEG President Ken Ferguson talk about the Bridge Overpass near the Hoover Dam, and also about plans for the New Year. We were honored to have Ken speak to us in January.

In February we were glad to host Dr. Barry Hibbs, Professor of hydrogeology at CSULA. Dr. Hibbs talked about groundwater quality models at Stevens Steakhouse in Commerce. He is excited to be joining and taking a more active part in AEG, especially as he sees that we are making a strong effort to include hydrogeologists and environmental geologists as both speakers and guests at our meetings. He intends on continuing his involvement and encouraging his students to attend our meetings.

Our next meeting will be held at one of our favorite locations, Cisco's in Westlake Village, on Tuesday, March 10, where we typically get a good turnout. Our speaker will be Desmond Chung of Geobrugg, and newsletter editor for the Inland Empire Chapter of AEG. Desmond will be discussing debris flow hazard mitigation tools and techniques. We look forward to having Desmond in a few weeks. Get out your phones and call your colleagues and friends, let's get a strong 50+ turnout for this one!

On April 8, our meeting will be co-hosted with the South Coast Geological Society, in Santa Ana, and the speaker will be Kenneth Hudnut of the USGS. Ken will be discussing the recent Napa earthquake. On May 13, we will be hosting Dr. Kim Bishop, Chair of Geology at CSULA. Dr. Bishop is a professor and mentor to several of our section members and will be discussing analysis of a mega-landslide on the island of Hawaii. The May meeting will be held at Victorio's in North Hollywood on Wednesday, May 13th.

Hollywood-Santa Monica Fault Field Trip in June

It has been a few years since we have hosted a good old geology field trip. So this year we are planning one: a field trip along the Hollywood and Santa Monica faults. The feedback from members has been tremendously positive for this, especially as it has been front-page headline news for some time. We have scheduled this Field trip for Saturday June 13, 2015.

We already have commitments from speakers for some of the anticipated stops: Miles Kenney, who has presented to AEG about his extensive studies related to the Purple Line extension in Beverly Hills; Eldon Gath, current Jahn's Lecturer and fault study specialist, and Fred Burnett of LADPW. We are trying to get commitments from Janis Hernandez and Jerry Treiman of the CGS as well. I even reached out to old-timer Richard Crook, who plans to attend and may be willing to discuss some of his field work along the fault. So it's really going to be a special field trip of a very current topic, which is also keeping many of us consultants working and employed! So spread the word! And if any of you have done any special studies along this fault that you want to discuss or perhaps make a presentation at a stop, please contact myself or Dave Perry to discuss. We have yet to hammer out all the details of the stops, speakers, etc. and we are willing to take suggestions. We will, however, be definitely organizing a vanpool! 40-50 cars driving along Santa Monica Boulevard looking for parking just isn't going to work! The vanpool will probably meet in Atwater area somewhere, where the field trip will start, and we will move west from there, and circle back around to Atwater to end the day.

Glad to be of service! See you all in March. Please spread the word and let's get a strong turnout!

Southern California Section

David L. Perry, *Membership Chair*

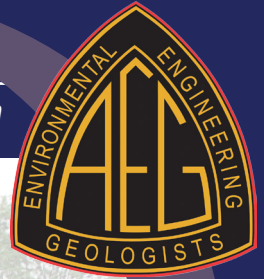
It has been a great pleasure to have served as the Southern California Chairperson from 2012 to 2014. I thank the membership and the cooperative teamwork of the current officers in getting the Section back on a sound footing. It was rewarding to see increased attendance at meetings, more student involvement, and improved membership renewals. We hope to continue the geographic outreach to our Los Angeles, Orange County, and Ventura County members by hosting the meetings in various venues throughout the year.

The Southern California Section elected new officers in January. **Shant Minas** of Applied Earth Sciences is the newly elected Chairperson, moving up from the Vice Chair position. **Darrin Hasham**, of Kleinfelder has been elected Vice Chair after having served as Secretary last year. **Edmond Lee** of GeoConcepts Inc. will remain as Treasurer and **Pedram Rahimikian** of GeoConcepts Inc. is the new Secretary. The new officers have the experience and energy to continue the success of our Section.

I have taken on the Membership Chair this year, a position that has been vacant for some time. I will work with Shant to contact some of our past members who have dropped off the radar screen and see what improvements can be made at the local level to improve member services. We believe that our joint meetings held with other professional associations will also encourage like-minded professionals to join AEG.

AEG Professional Forum

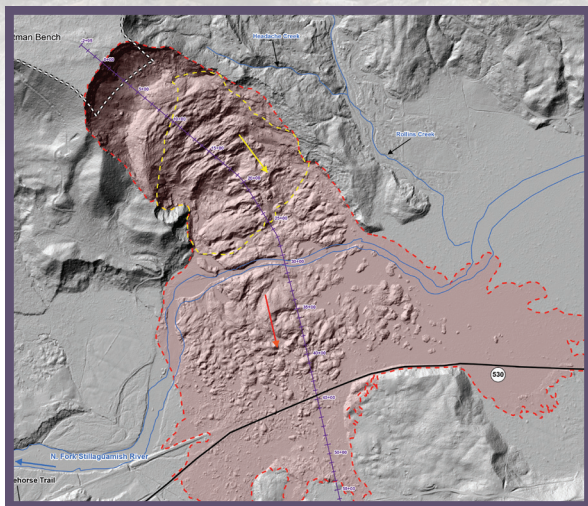
FEBRUARY 26th-28th, 2015 ■ University of Washington (UW), Seattle, Washington



Time to Face the Landslide Hazard Dilemma: Bridging Science, Policy, Public Safety, and Potential Loss



Recent prominent landslides in the U.S., such as the tragic March 2014 Oso Landslide in Snohomish County, WA, have resulted in significant loss of life and damage/cost to both private and public infrastructure and illustrate the current disconnect between landslide hazard assessment and the interests of the public. This AEG Professional Forum will bring together technical experts, federal/state/local government geologists, public officials and planners/regulators, and insurance and realty representatives, and media to discuss the next steps to use and communicate landslide data to better protect the public and infrastructure. The main objective of the conference is to develop strategies for bridging the gap between science, land use, and public interests so that the potential for future tragedies can be avoided or mitigated.



The conference will consist of two days (Thu-Fri) of presentations by invited speakers, posters, and discussion sessions regarding:

- *Landslide hazard assessment and risk methodology*
- *Integration of current national, state and local programs,*
- *What's working and what needs to improve*
- *Should we develop consensus recommendations and guidance for agencies responsible for land use*
- *Improving public communication and education*

There will also be an optional field trip to the Oso landslide and another recent landslide impacting several houses in Everett, WA on Saturday.



Co-Sponsor:

UW Dept. of Earth & Space Sciences (ESS)

Supporting Organizations (Preliminary):

WA State Geological Survey, AEG WA Section and UW Student Chapter, King County, WA, Canadian Geotechnical Society

Image Credits:

GEER Oso Investigation Team and Kathy Troost, UW ESS Dept.

Note: Details are preliminary and subject to change. Final details and registration information will be posted to www.aegweb.org and presented in future AEG News and AEG Insider publications

2015 AEG Professional Forum on Landslides

Time to Face the Landslide Hazard Dilemma: Bridging Science, Policy, Public Safety, and Potential Loss

Conference Dates: Thursday and Friday, February 26-27, 2015

University of Washington, 316 South Campus Center, Seattle, WA 98195

Field Trip: Saturday, February 28, 2015 - Everett and Oso Landslides, WA

(Current as of 01/21/2015) Schedule subject to change

Program

Thursday, February 26, 2015 focuses on current conditions and knowledge. Friday, February 27, 2015 focuses on needed improvements and what we do next. Saturday, February 28, 2015 is a field trip to visit landslides that exemplify the problems with our current systems. We will also solicit volunteered posters (at least 24) from non-invited participants that are consistent with and supplement the topics of the conference program. Posters will be on display in the conference room (and/or in the lobby area depending on space/number received). The poster author should plan to be at their posters for the break times specified for posters to interact with attendees.

Keynote Speakers

We have received commitments from four keynote speakers:

Keynote 1: The Oso WA Landslide Overview – Lessons Learned and Catalyst for this Conference; presented by Dr. Joe Wartman, PE, UW, co-leader of the GEER Oso team.

Keynote 2: What is Landslide Hazard? Inventory Maps, Uncertainty, and Actuarial Needs; presented by Dr. Jeffrey Keaton, PG, AMEC, co-leader of the GEER Oso team.

Keynote 3: What lessons from the National Earthquake Hazards Reduction Program can be Applied to Landslides? An Innovative New Approach; presented by Mr. Richard Roth, Jr., Consulting Insurance Actuary.

Keynote 4: Catalyst for the 2nd Day Workshop – Saving Lives and Property, Is Science the Easy Part?; presented by Dr. Dave Montgomery, UW, member of the GEER Oso team and member of the WA governor's Oso Landslide Commission.

<u>Thursday, February 26, 2015</u>	<u>Current Conditions and Knowledge</u>	<u>Presenter/Speaker</u>
7:00 – 8:00 AM	Pre-Program Setup and Posters - Coffee, Tea, and Baked Goods Provided	
<u>Morning Session</u>	<u>Landslide Mapping Programs and Impacts</u>	
8:00 - 8:15 AM	Introduction and Welcome	Kathy Troost, UW and Mark Molinari, AECOM
8:15 - 9:00 AM	<u>Keynote 1:</u> The Oso, Washington Landslide Overview – Lessons Learned and Catalyst for this Conference	Dr. Joe Wartman, UW and GEER Oso Team
9:00 - 9:45 AM	<u>Keynote 2:</u> What is Landslide Hazard? Inventory Maps, Uncertainty, and Actuarial Needs	Dr. Jeffrey Keaton, AMEC Foster Wheeler and GEER Oso Team
9:45 - 10:15 AM	Mid-Morning Break, Refreshments, and Posters	
10:15 – 10:45 AM	USGS National Landslide Hazards Program – Current Status, Pending Legislation, and Integration with State Programs	Dr. Jonathan Godt, USGS
10:45 – 11:15 AM	Canadian Technical Guidelines and Best Practices Related to Landslides: a National Initiative for Loss Reduction	Mr. Doug VanDine, VanDine Geological Engineering Ltd.

2015 AEG Professional Forum on Landslides

Time to Face the Landslide Hazard Dilemma: Bridging Science, Policy, Public Safety, and Potential Loss

Conference Dates: Thursday and Friday, February 26-27, 2015

University of Washington, 316 South Campus Center, Seattle, WA 98195

Field Trip: Saturday, February 28, 2015 - Everett and Oso Landslides, WA

(Current as of 01/21/2015) Schedule subject to change

11:15 – 11:45 AM	Other International Programs	Dr. Scott Burns, Portland State
11:45 – 12:15 PM	U.S. Army Corps of Engineers Reflections on Ground Failures and Particularly Landslides	Dr. Richard Olsen, US COE Headquarters
12:15 – 1:15 PM	Lunch (provided) and Posters	
<u>1st Afternoon Session</u>	<u>Example State Programs and Implementation</u>	
1:15 – 1:45 PM	Oregon DOGAMI State Landslide Mapping and Implementation at County/City Level	Mr. Bill Burns, Oregon DOGAMI
1:45 – 2:15 PM	North Carolina Landslide Mapping Program	Ms. Jennifer Bauer, Appalachian Landslide Consultants
2:15 – 2:45 PM	Landslides in Kentucky: Inventory, Data Delivery, and Collaboration	Mr. Matt Crawford, Kentucky Geological Survey
2:45 – 3:15 PM	Washington Landslide Program: the Past, Present, and Future	Mr. Stephen Slaughter, Washington DNR
3:15 – 3:30 PM	Mid-Afternoon Break – Beverages, Snacks, and Posters	
<u>2nd Afternoon Session</u>	<u>Landslide Risk, Prediction and Local Implementation</u>	
3:30 – 4:00 PM	Managing Slope Hazards Along Transportation Infrastructure	Mr. Tom Badger, WSDOT
4:00 – 4:30 PM	USGS Landslide Modeling and Prediction	Dr. Rex Baum, USGS
4:30 – 5:00 PM	King County Landslide Assessment Program	Mr. John Bethel, King County, WA
5:00 – 5:30 PM	Landslide Management During Property Development in Los Angeles County	Mr. Charles Nestle, Los Angeles County, CA
5:30 - 6:30 PM	Posters/Ice Breaker - Hosted Drinks and Appetizers	

2015 AEG Professional Forum on Landslides

Time to Face the Landslide Hazard Dilemma: Bridging Science, Policy, Public Safety, and Potential Loss

Conference Dates: Thursday and Friday, February 26-27, 2015

University of Washington, 316 South Campus Center, Seattle, WA 98195

Field Trip: Saturday, February 28, 2015 - Everett and Oso Landslides, WA

(Current as of 01/21/2015) Schedule subject to change

Friday, February 27, 2015

Where Do We Go From Here?

Morning Session

**Regulations, Planning and Public Policy –
Financial Impacts and How Do We Better Protect
Public Safety and Reduce Financial Losses?**

8:00 – 8:15 AM

2nd Day Introductions and Goals

**Jeff Keaton and Mark
Molinari**

8:15 – 9:00 AM

**Keynote 3: What Lessons from the National
Earthquake Hazards Reduction Program Can be
Applied to a National Landslide Hazards
Program? An Innovative New Approach**

**Mr. Richard Roth, Jr. –
Consulting Insurance
Actuary**

9:00 – 9:30 AM

**Development in Landslide Prone Areas: A Real
Estate Industry Perspective**

**Mr. Jim Berger, Director of
Land Development, Conner
Homes**

9:30 – 10:00 AM

**Managing Recognized Hazards: Land Use
Planning and Zoning, Monitoring and Public
Education/Notification**

Mr. Mark Molinari, AECOM

10:00 – 10:30 AM

Mid-Morning Break, Refreshments, and Posters

10:30 – 11:00 AM

**How Emergency Management Can Achieve a
"Landslide Victory" Related to Community
Preparedness and Public Warning**

**Mr. Mike Chard, Boulder, CO
Emergency Management
Director**

11:00 - 11:30 AM

**How Can Congress Help? The Potential for
Comprehensive Landslide Policy**

**Ms. Abigail Seadler,
American Geosciences
Institute (AGI)**

11:30 – 12:00 PM

Posters

12:00 – 1:15 PM

Lunch (provided) and Posters

1:15 - 1:45 PM

Landslide Loss or Planning/Public Education

Speaker TBD

1:45 – 2:30 PM

**Keynote 4: Saving Lives and Property, Is Science
the Easy Part?**

**Dr. David Montgomery,
University of Washington
and Washington Governor's
Commission on Oso
Landslide**

2:30 - 3:00 PM

Workshop Introduction

3:00 - 3:30 PM

**Mid-Afternoon Break, Beverages, Snacks, and
Posters**

3:30 - 5:00 PM

Where Do We Go From Here? Workshop

**Conveners Kathy Troost and
Jennifer Bauer**

5:00 - 5:30 PM

Workshop Recap and Closing

2015 AEG Professional Forum on Landslides

Time to Face the Landslide Hazard Dilemma: Bridging Science, Policy, Public Safety, and Potential Loss

Conference Dates: Thursday and Friday, February 26-27, 2015

University of Washington, 316 South Campus Center, Seattle, WA 98195

Field Trip: Saturday, February 28, 2015 - Everett and Oso Landslides, WA

(Current as of 01/21/2015) Schedule subject to change

<u>Saturday, February 28, 2015</u>	<u>Landslide Field Trip (Optional)</u>	<u>Draft Itinerary</u>
8:00 – 9:00 AM	Meet at UW Johnson Hall parking lot; drive to Panaview Landslide in Everett, WA	
9:00 – 9:45 AM	Stop 1, View of Panaview Landslide at head scarp (Kathy Troost, UW)	
9:45 – 10:30 AM	Drive to Steelhead-Haven Landslide in Oso, WA	
10:30 – 11:30 AM	Stop 2, Visit older landslide West of Oso (Alison Duvall, UW)	
11:30 – 12:30 PM	Stop 3, Park at west end of the landslide toe, walk east on White Horse Trail, view of south fork of the Stillaguamish River, and Oso landslide (Bob Aldrich and Dale Topham, Snohomish County)	
12:30 – 1:00 PM	Lunch	
1:00 – 2:00 PM	Stop 4, Debris field view and discussion (Dale Topham, Snohomish County)	
2:00 – 3:00 PM	Stop 5, Slope view and discussion (Jeff Keaton, AMEC/FW)	
3:00 – 4:00 PM	Stop 6, River view and discussion at east end of debris field (Bob Aldrich, Snohomish County)	
4:00 – 5:30 PM	Load on bus at C Post Rd, east end of landslide toe; Return to UW Johnson Hall parking lot	

Field Trip Information

The field trip consists of a full day of visiting landslide sites north of Seattle WA. We will travel by bus while lunch and snacks are included in the cost of the trip. The highlight of the trip is viewing the Oso landslide, a long run out liquefaction/slump event that occurred nearly one year ago. We plan to make several stops to view the devastation. We will also see evidence from an even larger landslide with long run out to the west of the Oso slide complex. The third landslide that we will visit is in a residential neighborhood in Everett where a series of landslides culminated in the loss of several homes including one that straddles a 15-foot-high head scarp. The weather in the Pacific Northwest is unpredictable in late February so be prepared for cold, windy, wet conditions. Dress in layers and be sure to bring rain gear. We will be leaving the bus and walking considerable distances, so warm waterproof footwear is in order. Consider bringing binoculars and gators especially if your boots are ankle high or lower. We will provide logistics information and a trip guide to all field trip registrants.

Chapter Meetings

Inland Empire:

For the latest information and updates, please visit <http://www.aegsc.org/chapters/inlandempire/>

Central Coast:

For the latest information and updates, please visit <http://www.aegsc.org/chapters/centralcoast/>

San Diego:

For the latest information and updates, please visit <http://www.aegsc.org/chapters/extremesocal/>

National Business Donation

- Platinum - \$1,000
- Gold - \$500
- Silver - \$250

Company name, address and contact information are presented in AEG News and section receives 10% of donation. A national donation does not yield a line in our local section newsletter.

Company & Employment Advertising Newsletter (includes SoCal website posting)

	<u>Month</u>	<u>Year</u>
▪ Business Card	\$10	\$100
▪ ¼ Page	\$20	\$200
▪ ⅓ Page	\$30	\$300
▪ ½ Page	\$35	\$350
▪ Full Page	\$50	\$500

SoCal website posting only

\$20/month

AEG offers two ways to increase your company's visibility for under \$100 per year. Each *Annual Report and Directory* and each issue of *Environmental & Engineering Geoscience* includes the Professional Index. Available only to AEG members, this is a great way to promote your company. For \$80 per year, you can be included in both the Directory and Journal.

Many of our members use this index to find colleagues to assist with projects or to recommend their services to others. Don't miss your chance to be included in the *2011 Annual Report and Directory*. Reservations are due by February 2011 to secure your listing.

Pricing is:

\$30 – *Annual Report and Directory*

\$60 – *Environmental & Engineering Geoscience*

\$80 – Both publications

You can order online at

<https://aegweb.org/i4a/forms/form.cfm?id=23&pageid=4837&showTitle=1>

or call Cathy Wilson at 303-757-2926.

* The deadline for submitting an advertisement for next quarter's newsletter is April 20.

YEAR 2015 CONTRIBUTORS NEEDED

Contributions from corporations and individual members are greatly appreciated. Contributors will be listed in our newsletter throughout the year and can post their logo or business card in the newsletter if so desired. Please mail contributions made out to **AEG** to our section treasurer, Edmond Lee.

2015 MEMBERSHIP RENEWAL

For those of you who have not yet renewed **(the deadline was November 1)**, are unsure about your membership status, or did not receive your membership dues statement, please contact AEG Headquarters at www.aegweb.org. You can renew your membership online. Please update your membership if you wish to continue to receive future issues of the newsletter.

EMPLOYMENT OPPORTUNITIES & ADVERTISING

The California Geological Survey is hiring engineering geologists.


CGS needs to recruit and hire new engineering geologists to maintain staffing levels as staff retires or moves on. This may not be the obvious time to look for a job with the state, but CGS gets most of its funding through special funds and contracts, not the general fund. When CGS needs to hire, an announcement is posted on the State Personnel Board's "VPOS" web site (<http://jobs.spb.ca.gov/wvpos>). Searching for "Engineering Geologist" there will find the positions that the State is now accepting applications for. Those currently include a position in CGS's Geologic Mapping Program. That position is listed as within the Department of Conservation. See the web page for the full job description and application instructions. Please note that to be hired by the state, a candidate must pass and place in the highest three ranks on a civil service exam. The Engineering Geologist exam, jointly developed by the Department of Conservation and the Department of Water Resources, is an online qualifications appraisal. It is possible to take the exam at the same time you send in an application, but both steps are required. The online application and "supplemental questionnaire" (exam) are at this web page.

<http://jobs.ca.gov/CASPB/sup/BulPreview.asp?R1=095699&R2=00103756&R3=9PB02>

http://jobs.spb.ca.gov/wvpos/more_info.cfm?recno=415797

Chris Wills
Supervising Engineering Geologist
California Geological Survey
801 K St. MS 12-32
Sacramento, CA 95814-3531

It's a scale...
It's a protractor...
It's the fastest apparent dip calculator!

The logo for ZIP A DIP features the word "ZIP" in a bold, sans-serif font, followed by a stylized letter "A" inside a triangle, and the word "DIP" in the same bold font. The entire logo is flanked by horizontal lines on both sides. Below the logo, the text "an Underground Insight product" is written in a smaller font.

Now available online at ZipADip.com

If you would like to post an ad in the newsletter, please contact Pedram Rahimikian at pedram@geoconceptsinc.com. Advertisement rates are shown in the box below.

	<u>Month</u>	<u>Year</u>
▪ Business Card	\$10	\$100
▪ ¼ Page	\$20	\$200
▪ ⅓ Page	\$30	\$300
▪ ½ Page	\$35	\$350
▪ Full Page	\$50	\$500
<u>SoCal website posting only</u>		
\$20/month		

Pedram Rahimikian
GeoConcepts, Inc.
14428 Hamlin Street #200
Van Nuys, CA 91401
818-994-8895