



**ASSOCIATION OF ENVIRONMENTAL & ENGINEERING GEOLOGISTS**  
***Southern California Section***  
*"Connecting Professionals, Practice, and the Public."*

## ***NEWSLETTER – April 2010***

### **Officers**

Chair - Peter Thams, [thams.peter@gmail.com](mailto:thams.peter@gmail.com), 805-493-0663  
Vice Chair – Steve Varnell, [svarnell@fugro.com](mailto:svarnell@fugro.com), 805-650-7000  
Treasurer - Dave Perry, [dlperry@mactec.com](mailto:dlperry@mactec.com), 323-889-5326  
Secretary – Gregory Sena, [gsena@dpw.lacounty.gov](mailto:gsena@dpw.lacounty.gov), 626-458-4923

Visit the Southern California Section Website: [www.aegsc.org](http://www.aegsc.org)

Newsletter Editor – Shant Minas, [shant@aessoil.com](mailto:shant@aessoil.com), 818-552-6000

**Upcoming AEG Meeting Date: \*\*\* April 13, 2010\*\*\***

**Meeting Location: Fox Sports Grill**

**30970 Russell Ranch Road, Westlake Village, CA 91362**

**Meeting Time: 6pm Social Hour, 7pm Dinner, 7:30pm Presentation**

**Cost: \$30 per person with reservations, \$35 without  
reservations, \$15 with a valid Student ID.**

**Reservations: Please call or email Dave Perry at  
[dlperry@mactec.com](mailto:dlperry@mactec.com) or call 323-889-5326**

**Speaker: Timothy A. Nicely, P.G., CHg**

**Topic: Hydrogeologic Studies Related to Effluent Disposal for the Expansion of a  
Proposed Wastewater Treatment Plant, Nipomo, California**

**\*\*\*\* Greetings, AEG members! Let us celebrate the onset  
of the Spring season with a strong turnout to our next  
meeting, to take place on Tuesday, April 13, 6pm, at Fox  
Sports Grill in Westlake Village. See below for the latest  
updates regarding the BGG transition to BPELS, and  
regional and national news. \*\*\*\***

<b>Chair Column</b>
---------------------

Peter Thams

Please join us at Fox Sports Grill in Westlake Village for our April dinner meeting. The grill just opened last fall for football season and promises to be a great venue for meetings for the West LA and Ventura membership. It's going to be casual with a few sandwich-type choices off their regular menu and will include a limited amount of beer and wine. I hope you'll join us.

We will have an update on issues surrounding the elimination of the BGG and expect to have important information regarding the status of the CAPG lawsuit to overturn AB4X-20, which eliminated the BGG. A hearing is scheduled for Friday April 9 on the demurrer filed by the Attorney General's office and we should find out then if we have a case. I'm not going to go into a great deal of detail here, since we'll be sending out a communication next week regarding the outcome of the hearing and the implications thereof. Charles Nestle has provided an update (see below) on the status of the PEGC bill AB 1431 which seeks to add a geologist to BPELS. In terms of working with BPELS and getting representation on board and at the staff level things are looking rather grim. As it stands, we have no representation on BPELS itself and little hope of getting any since we've been given indications that the Governor will veto AB 1431 if it passes, and we've heard that a Budget Change Proposal (BCP) to add a licensed geologist to BPELS staff has been rejected. This all leaves us with two administrative staff positions that are dealing with furlough Fridays and their own personal time off schedules, which appear to have been significant.

Again, please join us on Tuesday and with any luck we'll have something to celebrate in all this.

**April 13 Speaker: Timothy A. Nicely, P.G., C.Hg.,  
Project Hydrogeologist, Fugro West, Inc.**

**Title: Hydrogeologic Studies Related to Effluent Disposal for the Expansion of a  
Proposed Wastewater Treatment Plant, Nipomo, California**

**Abstract:** As the population of California increases, new and expanded infrastructure is required including potable water and sanitation services. Fugro has been involved with the design and the development of potable water supplies (groundwater well) and disposal of treated effluent in percolation basins for many years.

Fugro is performing hydrogeological studies related to the siting of new percolation basins for the expansion of a wastewater treatment plant in Nipomo, California. The current percolation ponds, located entirely on a pre-Flandrian dune complex, are limited with regard to percolation capacity by the presence of a laterally continuous clay layer at depth. During these studies, several sites were identified as potential locations for expansion of the percolation pond. The most promising site, located near the top of a 120 foot high bluff, is the subject of the current study, which determined whether the clay layer would cause the percolated wastewater to daylight within the bluff face. CPT soundings, drilled borings, large scale percolation testing, and groundwater modeling were performed to determine the fate of the proposed wastewater discharge.

**Bio:** Timothy Nicely is a project hydrogeologist at Fugro West, Inc. in Ventura, California. He specializes in groundwater supply projects including large diameter municipal water well installation, aquifer storage and recovery well installation and operation, as well as wastewater and fresh water percolation feasibility studies, groundwater/surface water interaction studies, design and operation of groundwater monitoring systems, and large groundwater basin studies projects throughout the state. He has a B.S. in Soil Science from Cal Poly, San Luis Obispo, with an emphasis on environmental studies. He has over 10 years of geologic consulting experience. Timothy is a licensed Professional Geologist and a Certified Hydrogeologist in California.

## **Status Update on AB 1431**

By Charles Nestle

March 26, 2010

As discussed previously by Peter Thams (AEG southern California Section Chair) in the AEG southern California Section newsletter and in the March AEG News, Assembly Bill 1431 (Hill) proposes to change the name of the Board for Professional Engineers and Land Surveyors to include one geologist and to add one geologist position on the board. How this is to be accomplished was the subject of a decidedly mono-directional “negotiation” between the sponsor of this bill, Professional Engineers in California Government (PECG) and their supporters, and AEG representatives during a meeting in PECG’s offices on February 16, 2010. Peter’s discussion of that meeting was emailed to AEG members March 1, and follows here:

### **Union Representing Engineers in State Government Opposes Adding Geophysicist to Board for Professional Engineers and Land Surveyors**

Peter Thams

The three section chairs of California AEG, Peter Thams, John Pfeiffer and Jared Pratt, along with Charles Nestle of the Legislative Committee met with the union Professional Engineers in California Government (PECG) on February 16, 2010, and were told PECG would not support an effort to place more than one geologist on the Board for Professional Engineers and Land Surveyors (BPELS). At a meeting in Assembly Member Hill’s office back in December, AEG representatives (Peter Thams and John Pfeiffer) were told that if AEG did not oppose PECG-sponsored Assembly Bill AB 1431, which increases the size of BPELS by one to allow for a geologist and changes the name of the board to include geologists and geophysicists, Assembly Member Hill’s office and PECG’s lobbyist, Steve Baker, would do everything they could to amend the bill to add a geologist and a geophysicist, once the bill cleared the assembly. AB1431 has cleared the Assembly and is moving on to the Senate, where it appears to be doomed to failure because it will likely need to be amended to include an additional public member, increasing the size of the board by two, and the Governor is unlikely to sign it.

PECG, representatives of various professional associations representing engineers, and G.V. Ayers from the Senate Business and Professions Committee also present at the meeting, didn’t come right out and say they wouldn’t support the addition of a geophysicist or more than one geologist to the BPELS, they simply opposed the only practical option of accomplishing this, which is to maintain the size of the board at thirteen and replace two engineering title acts with the two geology practice acts. Other options that stand no chance of success would be cautiously considered, but engineers were not going to give up their stranglehold on the board. It should be noted that BPELS does not have the majority seven public members stipulated in law, only recently acquired a fifth

public member to equal the engineers on the board, and are still outnumbered by technical members that, including a land surveyor, total six. Representatives from Assembly Member Hill's office (author of the bill) and the Governor's office, who was also invited to the meeting, did not attend.

The message was really very simple and was even alluded to if not outright stated: None of this matters to us and we're not going to waste any more time on it. It was left up to us (AEG) to garner support from the absent Governor's office to increase the size of the board. So it seems even the PECG proposal as written was doomed to failure from the outset and PECG was just going through the motions to mollify the relatively few geologists they represent in state government. The good news is that all those opposed to adding a geologist and a geophysicist to the board said they would support re-establishing the Board for Geologists and Geophysicists (BGG). The California Sections of AEG are discussing whether to oppose the PECG-sponsored AB1431 unless it is amended or support if amended. Whichever direction is chosen, we will work to amend the bill to include a both a geologist and a geophysicist through legislature with or without the support of PECG or the engineering organizations. Since the February 16th meeting, we have been told that PECG will amend the bill to eliminate geophysicists from the proposed name change in response to protest from BPELS staff.

Immediately following this meeting (beginning on the sidewalk outside the door), Jared, Peter, John, Judy Wolen, and myself discussed our options regarding support or opposition to the bill: support if amended, oppose unless amended, or remain neutral. This discussion continued for several days and generally settled on support unless amended. Later we heard that Senator Mark Wyland's office recommended remaining neutral (taking no position). Senator Wyland's opinion is important because we've approached him to carry legislation to reinstate the Board for Geologists and Geophysicists, and we want to maintain a good working relationship with him and his staff.

When the latest amended version of the bill was released (March 9, 2010 – attached) and scheduled for hearing on March 22, we re-evaluated our position and settled on Oppose As Written and Amended (see attached letter dated March 12, 2010). We felt that our position had been misunderstood in the past (as when Sam Blakeslee's staff thought we would prefer the BGG be incorporated into BPELS rather than the SMGB), and wanted to be certain that there would be no misunderstanding. We also felt that acquiescing to continually being told what to do had gotten us nowhere, and that it was time to begin doing what we know to be right.

“Compromise in the rough-and-tumble legislative process is not achieved by doilies and tea.”

Jerry Brown — CA State Attorney General and  
former CA Governor

A few days prior to the March 22 hearing date, Judy Wolen called to say that a few legislator's staff wanted to meet with me prior to the hearing to discuss AEG's position letter. Apparently our position was unexpected, and people had taken notice. Judy Wolen and I met with the staff of Senator Wyland, Assembly Member Hill (the bill's author), and G.V. Ayers, the consultant to the Senate Committee on Business, Professions and Economic Development. I said that this was an important bill, that it was absolutely necessary to have a geologist on the board, that passage of this bill was better than the it's not passing (no geologist on the board), but that it didn't go far enough. I also told what I was going to say during the hearing. Staff were pleased that ours was a "soft oppose" rather than a "hard oppose."

We picked up a hearing agenda from a rack in the corridor, and earlier I had been handed a copy of a letter of support for AB 1431 prepared by Joanne Arnold, Assistant Executive Officer of BPELS (both documents are attached. I had time only to scan them cursorily, but I should have taken the time to thoroughly read these prior to the hearing. We were constantly moving around and talking to people and there just wasn't time available to pause.

During the hearing, which was attended by myself, John Pfeiffer (AEG Sacramento Section Chair), and Judy Wolen (AEG Legislative analyst), the expected discussions were heard: Assembly Member Hill's introduction was nearly word for word what I had relayed as my introduction (coincidence?), support was provided by Steve Baker (representing PCEG), Joanne Arnold (BPELS), and then I spoke when asked if there was any opposition. The committee's staff then recommended adding one additional public member to BPELS, raising the total members as proposed in AB 1431 from 13 to 15 members. Given the Governor's long-stated position on boards and commissions, and the fact that he has only appointed enough members to each board to maintain a quorum (assuming they all show up), proposing to increase the size of the board guarantees the Governor's veto. Nevertheless, all voted yes (as expected). Then, as he did at the June 15, 2009 hearing, Senator Wyland made a very telling brief discussion about how the abolition of the BGG was unnecessary as it was a special funded board and no impact to the general fund resulted from consolidating it with BPELS.

On the flight back to Los Angeles, I thoroughly read the agenda discussion and Joanne Arnold's letter – *twice* – and recognized that the arguments in support of AB 1431 prepared by Ms. Arnold and reiterated in the agenda, had no basis in fact. Had I recognized this earlier, I would have pointed this out during the hearing (though the outcome probably would not have changed). Instead, that evening I wrote a second letter (attached) discussing the fatal flaws in Ms. Arnold's logic. What we will never know is if this letter represents a gross misunderstanding or lack of knowledge of the most fundamental aspects of the Professional Engineers Act by the board's Assistant Executive Officer, or if that letter intentionally misrepresented the facts. Ultimately neither matters; what does is that the statements in that letter clearly illustrate that we must all diligently scrutinize facts as presented by representatives of BPELS. Because at least some of the information presented by that board is demonstrably false.

AMENDED IN SENATE MARCH 9, 2010  
AMENDED IN ASSEMBLY JANUARY 4, 2010  
AMENDED IN ASSEMBLY APRIL 14, 2009  
CALIFORNIA LEGISLATURE—2009—10 REGULAR SESSION

**ASSEMBLY BILL**

**No. 1431**

---

---

**Introduced by Assembly Member Hill**

February 27, 2009

---

---

An act to amend Sections ~~6710 and 6711~~, *6711*, and *7801* of the Business and Professions Code, relating to geologists and geophysicists.

LEGISLATIVE COUNSEL'S DIGEST

AB 1431, as amended, Hill. Geologists and geophysicists.

Existing law establishes in the Department of Consumer Affairs a Board for Professional Engineers and Land Surveyors, consisting of 13 members. Existing law requires that membership to include 5 engineers, one land surveyor, and 7 public members. Existing law requires the Governor to appoint 5 of the public members and all of the professional members. The Senate Rules Committee and the Speaker of the Assembly are required to each appoint a public member.

Existing law requires the Board for Professional Engineers and Land Surveyors to administer the Geologists and Geophysicists Act.

This bill would rename the board as the Board for Professional Engineers, Land Surveyors, *and* Geologists ~~and Geophysicists~~. The bill would change the membership of the board to 14 to include a professional member licensed under the Geologists and Geophysicists Act. *The bill would make conforming changes to related provisions.*

Vote: majority. Appropriation: no. Fiscal committee: yes.  
State-mandated local program: no.

*The people of the State of California do enact as follows:*

1 SECTION 1. Section 6710 of the Business and Professions  
2 Code is amended to read:

3 6710. (a) There is in the Department of Consumer Affairs a  
4 Board for Professional Engineers, Land Surveyors, ~~Geologists,~~  
5 ~~and Geophysicists~~ *and Geologists*, which consists of 14 members.

6 (b) Any reference in any law or regulation to the Board of  
7 Registration for Professional Engineers and Land Surveyors, *or*  
8 *the Board for Professional Engineers and Land Surveyors*, is  
9 deemed to refer to the Board for Professional Engineers, Land  
10 Surveyors, ~~Geologists, and Geophysicists~~ *and Geologists*.

11 (c) This section shall become inoperative on July 1, 2011, and,  
12 as of January 1, 2012, is repealed, unless a later enacted statute,  
13 that becomes effective on or before January 1, 2012, deletes or  
14 extends the dates on which it becomes inoperative and is repealed.  
15 The repeal of this section renders the board subject to the review  
16 required by Division 1.2 (commencing with Section 473).

17 SEC. 2. Section 6711 of the Business and Professions Code is  
18 amended to read:

19 6711. Each member of the board shall be a citizen of the United  
20 States. Five members shall be registered under this chapter. One  
21 member shall be licensed under the Land Surveyors' Act, Chapter  
22 15 (commencing with Section 8700), one member shall be licensed  
23 under the Geologists and Geophysicists Act, Chapter 12.5  
24 (commencing with Section 7800), and seven shall be public  
25 members who are not registered under this act, licensed under the  
26 Geologists and Geophysicists Act, or licensed under the Land  
27 Surveyors' Act. Each member, except the public members, shall  
28 have at least 12 years active experience and shall be of good  
29 standing in his *or her* profession. Each member shall be at least  
30 30 years of age, and shall have been a resident of this state for at  
31 least five years immediately preceding his or her appointment.

32 SEC. 3. Section 7801 of the Business and Professions Code is  
33 amended to read:

34 7801. (a) "Board," as used in this chapter, means the Board  
35 for Professional Engineers ~~and~~, Land Surveyors, *and Geologists*  
36 established under Section 6710. Any reference in any law or  
37 regulation to the Board for Geologists and Geophysicists or the  
38 State Board of Registration for Geologists and Geophysicists shall

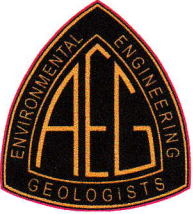


1 be deemed to refer to the Board for Professional Engineers and,  
2 Land Surveyors, *and Geologists*.

3 (b) The board shall succeed to, and is vested with, all the duties,  
4 powers, purposes, responsibilities, and jurisdiction previously  
5 vested in the Board for Geologists and Geophysicists.

6 (c) The board shall receive two personnel years that were  
7 previously allocated to the Board for Geologists and Geophysicists  
8 for the performance of the board's responsibilities under this  
9 chapter.

O



# Association of Environmental & Engineering Geologists

*"Connecting Professionals, Practice, and the Public"*

---

March 12, 2010

Senator Gloria Negrete-McLeod  
Chair, Senate Committee on Business, Professions and Economic Development  
State Capitol, Room 2053  
Sacramento, CA 95814

**RE: AB 1431 (Hill) – Oppose As Written and Amended (March 9, 2010)**

The Association of Environmental and Engineering Geologists (AEG) opposes passage of AB 1431 unless the following amendments are included:

- Maintain the total number of board members at the current level (13).
- Add one (1) Geophysicist to the board.
- Add "Geophysicist" to the board name.
- Revise Business and Professions Code §6712(c) and (d) to include the Geologist and Geophysicist positions as Governor's appointees.

AEG believes increasing the size of the board will result in decreased efficiency. The board may remain at the current level of thirteen (13) members by exchanging the two Title Act positions currently on the board (Structural Engineer and "...one of the remaining branches...") with the two geologist Practice Act positions (Geologist and Geophysicist).

As a Title Act license, the *practice* of structural engineering in California *does not* require a license as a Structural Engineer. The same is true for the remaining branches of engineering other than Civil, Mechanical, and Electrical. The practice of Geology and Geophysics *does* require a license per State law. Practice acts exist because the public and the legislature have determined that licensure of those professions is necessary for public protection. It follows that a board's professional members must be licensed under that board's practice acts in order for those members to be considered qualified to address public safety-related issues related to their profession.

Lastly, the latest amended AB 1431 does not state who has appointing authority for the geologist position. As professional members are Governor's appointments, it is essential that Business and Professions Code §6712 be revised to provide a mechanism for appointment.

Charles Nestle  
Legislative Committee      Cell: (626) 233-9260      [ctnestle@socal.rr.com](mailto:ctnestle@socal.rr.com)  
(Representing the Sacramento, San Francisco, and southern California Sections of AEG)

cc: Senate BP&ED Committee members

---

STAFF  
BILL GAGE  
Chief Consultant  
G.V. AYERS  
SARAH MASON  
ROSIELYN PULMANO  
KATHY SULLIVAN  
Committee Assistant



MEMBERS  
Vice Chair – MARK WYLAND  
SAM AANESTAD  
ELLEN CORBETT  
LOU CORREA  
DEAN FLOREZ  
JENNY OROPEZA  
GLORIA ROMERO  
MIMI WALTERS  
LELAND YEE

## California Legislature

### Senate Committee on Business, Professions & Economic Development

Senator  
**Gloria Negrete McLeod**  
Chair

**Monday, March 22, 2010**  
**1:30 p.m. or Upon adjournment of session, Room 3191**

### AGENDA

#### Measures Heard in File Order

<u>ITEM#</u>	<u>BILL#</u>	<u>AUTHOR</u>	<u>DESCRIPTION</u>
1.	SB 1084	Liu	California Economic Security Task Force
2.	SB 1106	Yee	Prescribers: dispensing of samples
3.	SB 1171	Negrete McLeod	Regulatory boards: operations
4.	SCR 63	Yee	Secondhand goods
5.	AB 1235	Hayashi	Healing arts: peer review
6.	AB 1431	Hill	Geologists and geophysicists



**SENATE COMMITTEE ON BUSINESS, PROFESSIONS  
AND ECONOMIC DEVELOPMENT**

Senator Gloria Negrete McLeod, Chair

Bill No: AB 1431 Author: Hill  
As Amended: March 9, 2010 Fiscal: Yes

**SUBJECT:** Geologists and geophysicists.

**SUMMARY:** Renames the Board for Professional Engineers and Land Surveyors and increases the Board membership from 13 to 14 by adding a licensed geologist or geophysicist to the Board.

**Existing law:**

- 1) Licenses and regulates engineers and land surveyors by the Board for Professional Engineers and Land Surveyors (Board) within the Department of Consumer Affairs.
- 2) Provides that the Board is made up of 13 members, consisting of 6 professional members (5 engineers and 1 land surveyor) and 7 public members.
  - a) The Governor appoints 5 public members and the 6 professional members.
  - b) The Senate Rules Committee and the Speaker of the Assembly each appoint a public member.
- 3) Establishes, effective October 23, 2009, that the Board shall succeed to and is vested with all the duties, powers, purposes, responsibilities, and jurisdiction previously vested in the Board for Geologists and Geophysicists (BGG), thereby requiring the Board to administer the Geologists and Geophysicists Act.

**This bill:**

- 1) Renames the Board as the Board for Professional Engineers, Land Surveyors and Geologists.
- 2) Increases the membership of the Board from 13 to 14 by adding a professional member licensed under the Geologist and Geophysicist Act.
- 3) Makes technical, conforming and clarifying changes.

**FISCAL EFFECT:** The Assembly Appropriations Committee analysis, dated January 21, 2010, indicates minor costs of less than \$20,000 per year to the Professional Engineers and Land Surveyors Fund, a Special Fund.

**COMMENTS:**

1. **Purpose.** This bill is sponsored by Professional Engineers in California Government (PECG) to rename the Board for Professional Engineers and Land Surveyors to the Board for Professional Engineers, Land Surveyors and Geologists, and increase the membership of the Board from 13 to 14 by adding a professional member licensed under the Geologists and Geophysicists Act.

In 2009, the Legislature approved and the Governor signed ABX4 20 (Strickland, Chapter 18, Statutes of 2009, effective October 23, 2009). One provision of that bill consolidated the BGG into the Board, thereby transferring all licensing and regulatory responsibilities for licensed geologists and geophysicists to the Board. However, the legislation did not change the name of the Board to reflect its new responsibilities, nor did it include a licensed geologist or geophysicist on the Board now overseeing geologist and geophysicists. This bill would make those changes.

2. **Hearing on Governor's Elimination, Consolidation and Reorganization Proposals.** In the summer of 2009, the Business, Professions and Economic Development Committee (Committee) convened a hearing on the Governor's Elimination, Consolidation and Reorganization Proposals made in the May Revision of the 2009-2010 State Budget. The Budget Conference Committee had requested that the Committee consider a number of the specific elimination, consolidation and reorganization proposals made by the Governor, as well as other consolidation proposals identified by the Committee. In the hearing, the Committee received testimony from the Administration, the departments, boards and bureaus that would be affected by the proposed changes, the Legislative Analyst's Office (LAO), the Center for Public Interest Law, professional associations, members of the regulated professions, and members of the public. The Committee made its recommendations in a Report to the Conference Committee. Those recommendations and the legislative changes necessary to implement the recommendations were the bases for ABX4 20.

At that hearing, the Committee considered 13 separate consolidation or elimination proposals, including whether the BGG should be consolidated with the State Mining and Geology Board. That proposal was approved on an 8-1 vote. Ultimately, during Budget negotiations, that recommendation was modified to consolidate the Board of Geologists and Geophysicists with the Board for Professional Engineers and Land Surveyors. Those changes were included in ABX4 20 (Strickland, Chapter 18, Statutes of 2009).

3. **Background on Consolidation Efforts.** Over that last fifteen years, a number of efforts have been made to merge or consolidate the BGG into other regulatory agencies. In 1994, the Business and Professions Committee initially reviewed whether the BGG should be merged with another entity including the Board. At that time, no changes were made to BGG. In 1996 and again in 1999, the Joint Legislative Sunset Review Committee (Sunset Review Committee) and DCA reviewed the Geology Board and both DCA and the Sunset Review Committee recommended BGG be continued as an independent board and not be combined with any other entity.

In 2004, the Governor's California Performance Review (CPR) recommendation was to combine BGG with the Board of Mining and Geology and place the new board under the Division of Land Management within the proposed new Department of Natural Resources.



LAO and the Administration's CPR Commission rejected this proposal. The Governor's Reorganization Plan which included converting the BGG to a bureau was rejected by the Legislature, and ultimately withdrawn by the Administration.

4. **Arguments in Support.** The Sponsor argues in support that changing the makeup and name of the Board is good policy and common sense so that the title reflects the professions the Board is licensing. The Sponsor further believes that fairness and common sense requires that the Board include at least one licensee. It is not reasonable for a Board to oversee a profession without any professional representation of that profession, according to the Sponsor.

With the latest amendments to remove the term "Geophysicist" from the proposed name, the Board for Professional Engineers and Land Surveyors is in support of the bill, stating:

The Board's position is not intended to slight geophysicists; the Board does not believe that it is necessary to include their title in the name of the Board. In response to the argument that geophysicists are a practice protected group of licensees, so are the engineering professions of civil, electrical, and mechanical engineers and those titles are not currently included in the name of the Board. Furthermore, the 200 California licensed geophysicists are not hired by your average public consumer; they are hired by a more sophisticated consumer. Therefore, being able to locate the Board that regulates geophysicists would not be an issue.

5. **Arguments in Opposition.** The Association of Environmental and Engineering Geologists (AEG) has taken an oppose unless amended position on the bill, urging that the bill be amended to: (1) maintain the number of Board members at 13 members, the current level; (2) add one geophysicist to the Board; (3) add "Geophysicist" to the name of the Board; (4) revise Business and Professions Code § 6712 to make conforming changes regarding the Governor's authority to appoint the new Board members.

AEG believes increasing the size of the Board will result in decreased efficiency, and suggests that the Board remain at the current level of 13 members by exchanging the two title act positions currently on the Board (one structural engineer; one of the remaining branches of engineering) with two Geologist and Geophysicist Act licensees.

AEG further argues that as a title act license, the *practice* of structural engineering *does not* require a structural engineer license; and the same is true for the remaining branches of engineering, other than civil, mechanical, and electrical, but the practice of geology and geophysics *does* require a license in California. According to AEG, practice acts exist because the public and the Legislature have determined that licensure of those professions is necessary for public protection; and it therefore follows that "a board's professional members must be licensed under the board's practice acts in order for those members to be considered qualified to address public safety-related issues related to their profession."

6. **Policy Issue: Public Member Majority.** Over the last 15 years, the Legislature has made significant strides with the consumer boards under DCA in balancing the professional and public representation in board membership. The Legislature has consistently moved toward having greater public representation on consumer boards, and has established public member majorities on all non-health boards (except for the California Architects Board which

has 5 professional and 5 public members), and several health-related boards have public member majorities (Board of Podiatric Medicine, Acupuncture Board, Board of Behavioral Sciences, Board of Vocational Nurses and Psychiatric Technicians).

In 2001, the Sunset Review Committee, addressed the balance of public and professional on DCA boards as a "crosscutting issue" under sunset review, stating:

As a general rule, consumer protection is best served when consumers have balanced representation on the boards under the Department's purview. Consumers are generally represented by a board's public members. Prior to the initiation of the sunset review process, many boards had more professional members than public members. The sunset review process has been effective in bringing greater balance to most Department boards . . . The primary rationale for professional members on licensing boards is their understanding of the profession they regulate.

Since that time, based upon the Sunset Review Committee and Administration recommendations, several bills have been enacted which have moved the boards to greater consumer representation.

***In its current form, this bill would add a licensed geologist or geophysicist to the Board, increasing the membership to 14 members and making the number of professional members equal to the number of public members. In order to maintain a public member majority on the Board, staff recommends amending the bill to include an additional public member, bringing the total Board membership to 15 (7 professional, 8 public members).***

#### **SUPPORT AND OPPOSITION:**

##### Support:

Professional Engineers in California Government (Sponsor)  
Board for Professional Engineers and Land Surveyors

##### Opposition:

Association of Environmental and Engineering Geologists

Consultant: G. V. Ayers

**BOARD FOR PROFESSIONAL ENGINEERS AND LAND SURVEYORS**

2535 CAPITOL OAKS DRIVE, SUITE 300, SACRAMENTO, CA 95833-2926

TELEPHONE: (916) 263-2222 CALNET: 8-435-2222

INTERNET ADDRESS: <http://www.dca.ca.gov/pels>

FAX: (916) 263-2246 or (916) 263-2221



March 15, 2010

The Honorable Jerry Hill  
California State Assembly  
State Capitol, Room 4146  
10<sup>th</sup> and L Streets  
Sacramento, CA 95814

**RE: Support of Assembly Bill 1431**

Dear Assembly Member Hill:

The Board for Professional Engineers and Land Surveyors voted at its January 27, 2010, Board meeting to support Assembly Bill 1431 if it was amended to remove the term "Geophysicist" from the proposed name change of the Board. Your March 9, 2010, amendment removes the term "Geophysicist" from the proposed change so the Board is now in support of your bill.

The Board's position is not intended to slight geophysicists; the Board does not believe that it is necessary to include their title in the name of the Board. In response to the argument that geophysicists are a practice protected group of licensees, so are the engineering professions of civil, electrical, and mechanical engineers and those titles are not currently included in the name of the Board. Furthermore, the 200 California licensed geophysicists are not hired by your average public consumer; they are hired by a more sophisticated consumer. Therefore, being able to locate the Board that regulates geophysicists would not be an issue.

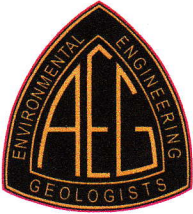
Thank you for your time in this matter. If you have any questions or concerns, please contact me at (916) 263-2283.

Sincerely,

Joanne Arnold  
Assistant Executive Officer

Cc: Senate Business, Professions and  
Economic Development Committee  
Steve Baker, Aaron Read & Associates





# Association of Environmental & Engineering Geologists

*"Connecting Professionals, Practice, and the Public"*

---

March 22, 2010

Mr. G.V. Ayers  
Consultant, Senate Committee on Business, Professions and Economic Development  
State Capitol, Room 2053  
Sacramento, CA 95814

**RE: Rebuttal to March 15, 2010 letter by Joanne Arnold in Support of AB 1431**

Mr. Ayers,

I wish to correct factual errors in statements made by Ms. Joanne Arnold in her (attached) March 15, 2010 letter of support of AB 1431. Firstly:

*"In response to the argument that geophysicists are a practice protected group of licensees, so are the engineering professions of civil, electrical, and mechanical engineers and those titles are not currently included in the name of the Board."*

Civil, electrical, and mechanical engineers are branches of professional engineering that have practice protection (B&P Code §6701 and 6702 et. sec.). The primary title is "Professional Engineer" and, therefore, contrary to the statement made by Ms. Arnold, *all engineers are currently represented by the existing Board name.*

This is also reflected in the fact that the title "Professional Engineer" is required for use by all engineers in California in the seal design specified in Code (B&P Code §6764).

The above-mentioned Code sections are copied below.

Additionally, the following statement made by Ms. Arnold is not supported by any study and has no basis in fact:

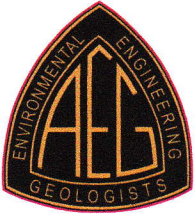
*"Furthermore, the 200 California licensed geophysicists are not hired by your average public consumer; they are hired by a more sophisticated consumer."*

During the last Sunset Review hearing for the Board for Geologists and Geophysicists, Senator Figueroa specifically asked who the consumers of professional geologic services were. I provided as accurate a response as I could, based on a single year's list of projects requiring geological services submitted for review to the County of Los Angeles. As far as I am aware, this is the only such study ever done for the geological profession, and I doubt that the Board for Professional Engineers and Land Surveyors staff has had the opportunity to contract for such a study since taking over the former BGG's responsibilities.

Thank you.

Charles Nestle  
Legislative Committee      Cell: (626) 233-9260    [ctnestle@socal.rr.com](mailto:ctnestle@socal.rr.com)  
(Representing the Sacramento, San Francisco, and southern California Sections of AEG)

---



# Association of Environmental & Engineering Geologists

*“Connecting Professionals, Practice, and the Public”*

---

6701. **Professional engineer** defined “**Professional engineer**,” within the meaning and intent of this act, refers to a person engaged in the professional practice of rendering service or creative work requiring education, training and experience in engineering sciences and the application of special knowledge of the mathematical, physical and engineering sciences in such professional or creative work as consultation, investigation, evaluation, planning or design of public or private utilities, structures, machines, processes, circuits, buildings, equipment or projects, and supervision of construction for the purpose of securing compliance with specifications and design for any such work.

6702. Civil engineer defined “Civil engineer” as used in this chapter means a **professional engineer** in the branch of civil engineering and refers to one who practices or offers to practice civil engineering in any of its phases.

6702.1. Electrical engineer defined “Electrical engineer” as used in this chapter means a **professional engineer** in the branch of electrical engineering and refers to one who practices or offers to practice electrical engineering in any of its phases.

6702.2. Mechanical engineer defined “Mechanical engineer” as used in this chapter means a **professional engineer** in the branch of mechanical engineering and refers to one who practices or offers to practice mechanical engineering in any of its phases.

6764. Seal or stamp Each **professional engineer** registered under this chapter shall, upon registration, obtain a seal or stamp of a design authorized by the board bearing the registrant’s name, number of his or her certificate or authority, the legend “**professional engineer**” and the **designation of the particular branch or authority in which he or she is registered**, and may bear the expiration date of the certificate or authority.

---

## April 2010 AEG Announcements: from Duane T. Kreuger, AEG President

1. 2010 Shelmon Conference. The dates are set for May 13 through May 15, 2010 in sunny Galveston, Texas. [Click here](#) for registration forms, abstract submittal and venue information.
2. 2010 Annual Meeting in Charleston, South Carolina; September 20-25. The registration forms and abstract submittal information are now available. Also, the new deadline for submittal of abstracts is April 15th, 2010. Details of Technical Sessions, Symposia, Field Trips, Short Courses and Social Events are also available on AEG's website. [Click here](#) for more information.

Special Note: The Environmental Site Characterization and Remediation Technical Workgroup (ESCRTW), is planning a **Site Characterization and Remediation Symposium** on September 24, 2010. The symposium will consist of a keynote lecture followed by a series of 7-10 presentations by various participants, and a panel discussion at the end. In addition, we are also considering publishing the full papers in a symposium proceedings. All submitted abstracts will be peer reviewed by a panel of AEG members, and selected candidates will be notified of its status promptly.

3. E-publishing update. The Journal of Environmental & Engineering Geoscience will be available to Members electronically soon. Look for more details in the coming month. Also, the Editors of the Journal want your technical papers and peer-reviewed articles for publication! Please contact Abdul Shakoor ([ashakoor@kent.edu](mailto:ashakoor@kent.edu)) if you need more information.
4. Student Members. The Student and Young Professional Support Committee has developed numerous programs to help you with everything from starting a student chapter, the Visiting Professionals Program and writing your resume – just visit AEG's website and navigate through the Students tab. You can follow the Committee on Facebook at New Geologist. Also, if you are an AEG Student Member who recently graduated or is about to graduate, you are eligible to receive Full Member benefits FREE for one year after graduation. [Click here](#) or contact AEG HQ for more details.
5. The 2010 Mid Year Board of Directors (BOD) Meeting will be held on May 1<sup>st</sup> and 2<sup>nd</sup> in St. Louis, Missouri. **Section Chairs** please start thinking about your arrangements now. A link to the 30-day notice of agenda items that Chairs are expected to review will be sent soon. Section Chairs who cannot attend are encouraged to appoint a proxy to attend in accordance with the By-Laws.
6. American Geological Institute (AGI) Congressional Visit Days (CVDs) are scheduled for April 28 & 29 and September 15 & 16, 2010. AEG encourages Members and other geoscience professionals to attend one of the scheduled CVDs and talk to our elected officials about the importance of engineering geology. [Click here](#) for more information.



7. GEO HAZARDS IN THE *NEWS*! AEG NEWS, that is.

In the past few weeks, several earthquakes, at least one failed retaining wall, a major rockslide and the annual flooding of the nations rivers have been in the national news. While AEG doesn't have the means to report on these events instantly, we would like to have coverage in AEG *NEWS* and in Environmental & Engineering Geoscience. If your area experiences a geohazard event, please photograph it (high resolution, please. 300 dpi) and send the photos along with text to Martha Kopper, AEG NEWS editor, ([kopper@sbcglobal.net](mailto:kopper@sbcglobal.net)) or submit to EEG via <http://eeg.allentrack.net> with an email to Abdul Shakoor ([ashakoor@kent.edu](mailto:ashakoor@kent.edu)). The photos must be attached as jpg files not embedded in the text file. If only photos are available, send 'em along with captions. AEG is in the applied geology business and our members are interested in what's happening world-wide.

8. AEG Announces new Advertising/Sponsorship/Exhibitor Packages. Our standard advertising-sponsorship & meeting exhibitor plans and rates are still valid. However, in an attempt to bundle some or all of the various opportunities, we have created different levels for our vendors and potential vendors who for instance may run a full page ad in the AEG *NEWS* and exhibit at an Annual Meeting. [Click here](#), see page 3 of your March AEG *NEWS* or contact AEG Headquarters for more information.

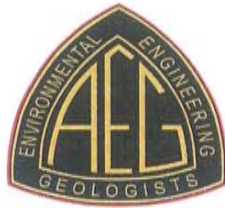
## **AEG North Central Section Short Course May 18-19, 2010**

### **A New World in Geophysics**

#### **About the Course**

Sponsored by the North Central Section of the Association of Environmental and Engineering Geologists, the short course is designed for practicing Civil Engineers, Geologists, Engineering Geologists, Archaeologists, Law Enforcement Investigators, Consultants, Owners, Managers and others responsible for development or evaluation of site characterization studies that might benefit from the application of modern geophysical methods. Many of us were exposed to geophysics during our undergraduate or graduate studies, which may have been completed many years ago now. There has been much progress in geophysics since your undergraduate studies. This course will bring you up-to-date with the latest developments in geophysical methods for land, water, and subsurface characterization. In addition to providing the student with the working knowledge of each of the available geophysical tools, pitfalls in subcontracting geophysical services will be presented. After you complete this course, you will be an informed consumer of geophysical services and be capable of scoping and applying the correct geophysical methods to solve your particular problem. Course participants will earn 2.0 hours of Continuing Education Credit.

Please see attachment below for more information.



# Association of Environmental & Engineering Geologists

## NORTH CENTRAL SECTION

"Serving Professionals in Engineering, Environmental and Groundwater Geology Since 1957"

## New World in Geophysics

### About the Course

Sponsored by the North Central Section of the Association of Environmental and Engineering Geologists, the short course is designed for practicing Civil Engineers, Geologists, Engineering Geologists, Archaeologists, Law Enforcement Investigators, Consultants, Owners, Managers, and others responsible for development or evaluation of site characterization studies that might benefit from the application of modern geophysical methods. Many of us were exposed to geophysics during our undergraduate or graduate studies, which may have been completed many years ago now. There has been much progress in geophysics since your undergraduate studies. This course will bring you up-to-date with the latest developments in geophysical methods for land, water, and subsurface characterization. In addition to providing the student with a working knowledge of each of the available geophysical tools, pitfalls in subcontracting geophysical services will be presented. After you complete this course, you will be an informed consumer of geophysical services and be capable of scoping and applying the correct geophysical methods to solve your particular problem. Course participants will earn 2.0 hours of Continuing Education Credit.

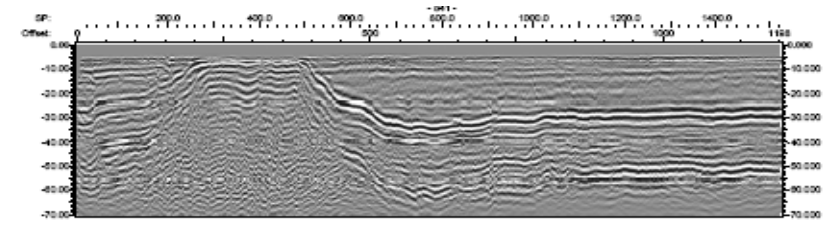
### The Course Schedule

#### Day 1 - Methods Discussion

Morning session: Introduction (overview of topics)

- Seismic refraction
- Seismic reflection
- Seismic surface waves (MASW)
- Resistivity
- SP, IP
- EM, VLF
- GPR
- Gravity
- Magnetics
- Borehole
- Water-borne
- Airborne

Afternoon session: Outdoor Stations with Field Demonstrations



#### Day 2 - Applications and Limitations

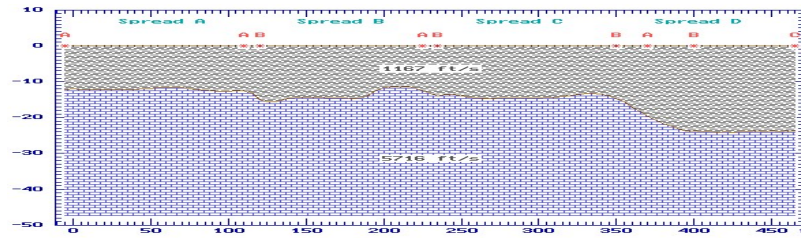
Morning Session:

Exploration approach (scope of work - phased and sequential surveys, need multiple methods)  
Client / contractor / geophysicist interaction  
Limitations and pitfalls (noise sources, geometry, tomographic artifacts, smoothing)

Specific Applications -

- Karst (resistivity, refraction tomography, MASW, GPR, gravity?)
- Buried fracture mapping
- Depth to bedrock (refraction and reflection, MASW)
- Groundwater contaminant plume mapping
- Buried tanks, utilities, UXO
- Site characterization / brownfields
- Archaeology and forensics
- Downhole characterization (fractures, voids, glacial sediments, shear-wave surveys, water flow)
- Structures (existing infrastructure characterization - rebar, drain tiles)
- Water-borne geophysics
- Landfills
- Underground mines and voids / subsidence risk
- Wetlands
- Alternative energy
- Carbon-dioxide sequestration
- Ore bodies and mines, industrial minerals

Afternoon session: Stations with Data Interpretation/Data Reduction Demonstrations



### About the Course Instructors-

The course is taught by geophysics experts who are experienced with daily application of a wide range of geophysical tools for a variety of purposes.

**Dr. Philip Carpenter-** Dr. Carpenter is Professor of Environmental Geophysics, Engineering Geology, and Seismology at Northern Illinois University in DeKalb, Illinois. He received a PhD in Geoscience from New Mexico Institute of Mining and Technology in 1984. He has worked in oil/gas exploration at Chevron USA, Inc. and Mobil Oil. This was followed by employment in the seismology group at Los Alamos National Laboratory in New Mexico, where he did research on methods of detecting underground nuclear tests. He then joined NIU where he has been employed for over 20 years. Dr. Carpenter's research interests include: (1) Environmental geophysics: noninvasive detection of pollution from landfills and hazardous waste sites, both in the U.S. and China; (2) geophysical surveys over karst areas; (3) earthquakes and ambient ground vibrations in the Midwestern U.S.

**Dr. Timothy Larson-** Dr. Larson is Senior Geophysicist with the Illinois State Geological Survey (ISGS) under the administration of the University of Illinois at Urbana-Champaign. He received a PhD in geology from that university in 1990. Since 1980 he has worked for the ISGS as a geologist and geophysicist. His major research interests include: hydrogeophysical research and case studies; research and case studies using primarily resistivity and seismic refraction techniques but also EM, GPR, and gravity; seismicity of Illinois and neotectonics

of the Central U.S.; shallow seismic reflection studies; studies of shallow heat and moisture flow; and crustal studies of McMurdo Sound, Antarctica.

**Dr. Ahmed Ismail-** Dr. Ismail is a Geophysicist with the Illinois State Geological Survey (ISGS) under the administration of the University of Illinois at Urbana-Champaign. He received a PhD in applied geophysics from the University of Missouri-Rolla in 2003. Dr. Ismail worked as a researcher with the National Research Institute of Astronomy and Geophysics, Cairo, Egypt, from late 2003-early 2005; as a post-doctoral research assistant at the University of Missouri-Rolla from 2005-early 2006; and in his present position with ISGS since 2006. Publications he has co-authored include: *Misleading Interpretation of Shallow Seismic Methods, Three Case Studies from MASW, P-Wave Reflection and SH-Wave Reflection Surveys* (Symposium on the Application of Geophysics to Engineering and Environmental Problems, 2009); *Near Surface Characterization of a Geotechnical Site, North East Missouri, Using Shear Wave Velocity Measurements* (Near Surface Geophysics Journal, European Association of Geoscientists & Engineers, 2007); *Ground-Penetrating Radar: A Tool for Monitoring Bridge Scour* (Environmental and Engineering Geosciences, 2007); *Imaging glacial sediments and underlying bedrock in Illinois using surface wave data acquired by a land streamer* (Highway Geophysics - NDE Conference, St. Louis, Missouri, December, 2006).





### About the Morton Arboretum-

The Morton Arboretum is an outdoor museum of trees and other plants from around the world. The 16 miles of hiking trails have been carefully planned to enhance your experiences on the grounds. These trails lead you through plant collections, natural areas, and other scenic landscapes. Several trails are paved, but most are wood-chipped.

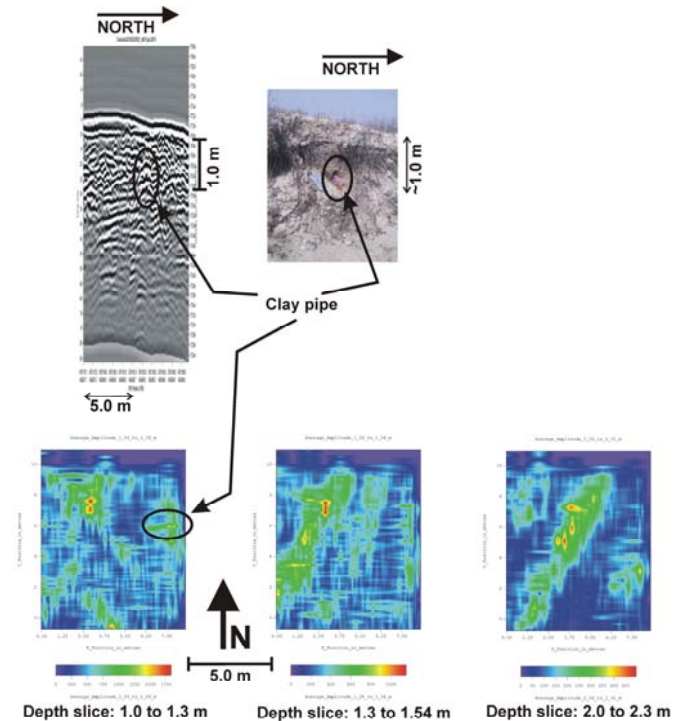
Have you ever seen a majestic tree reflected in a clear pond? Have you listened carefully to the vibrato of frogs coming from silent lakes and marshes? Water is an integral part of the Arboretum—not only because it nourishes the trees and grassy areas around it, but because it nourishes people, too. Sit quietly beside Lake Marmo, Meadow Lake, or Sterling Pond. Reflect on the natural beauty you see there. The lakes, ponds, marshes, and rivers throughout the Arboretum attract birds, animals, wildflowers, and nature lovers.

Schulenberg Prairie is one of the oldest planted prairies in the Midwest. It's lush with flowering plants from April through October, resplendent with asters and

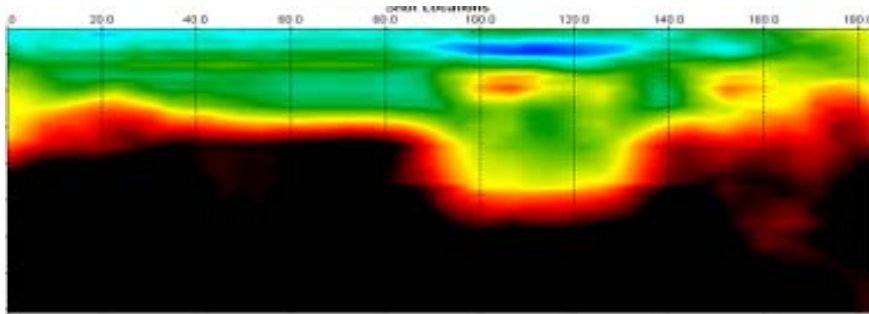
grasses in September and October and alive with migrating birds in November and December. Schulenberg Prairie is home to at least 500 different plant species. Be sure to stop at the Prairie Visitor Station.

### About the Meeting Space-

The short course will be held in the Founder's Room at the Thornhill Education Center on the Arboretum grounds. The Founder's Room, with its ornate bookcases, marble fireplace, intimate alcove, and stained glass windows, is a visual step back into the early 20th century.







## Where to Stay-

[www.stayinlisle.com](http://www.stayinlisle.com)

Visitor information about Lisle, Illinois and the surrounding area.

### Hilton Lisle/Naperville

3003 Corporate West Drive, Lisle, IL 60532

Phone: 630-505-0900

Fax: 630-505-8948

From the Arboretum, take Route 53 to Warrenville Road and turn right. Go 1.5 miles west. The hotel is on the left.

### Hyatt Lisle

1400 Corporate Drive, Lisle, IL 60532

Phone: 630-852-1234

Fax: 630-852-1260

From the Arboretum, drive south on Route 53 just past Warrenville Road and turn right.

### Marriott Hickory Ridge Conference Center

1195 Summerhill Drive, Lisle, IL 60532

Phone: 630-971-5000

Fax: 630-971-6956

From the Arboretum, drive south on Route 53 for about three miles and turn right on Summerhill Drive. The hotel provides complimentary transportation within a five-mile radius, which includes The Morton Arboretum and the Lisle Metra Train Station. Transportation must be pre-arranged.

### Wyndham Lisle-Chicago Hotel

3000 Warrenville Road, Lisle, IL 60532

Phone: 630-505-1000

From the Arboretum, take Route 53 to Warrenville Road and turn right. Go about 1.5 miles, and the hotel is on the right.

### Taxi Services in Lisle

It is about a five-minute cab ride between the train station in Lisle and the Arboretum. A few local taxi services are:

- American Taxi at 630-920-9480
- A M Regional Taxi at 630-971-8888
- My Chauffeur Limo Service at 847-376-6169
- DuPage Limo Service at 630-941-3080 or 800-426-9890

### Accessibility

All buildings and paved garden paths and trails are accessible to strollers and wheelchairs.

## Registration Form

Please make checks payable to "AEG North Central Section". If you sign up for Continuing Education Credits you will be mailed a certificate after completion of the course and will earn 2.0 CEU credits. If you are not registering online, you may mail the form and a check to:

AEG North Central Section (c/o Dr. Kevin Richards)  
1530 Willow St.  
Lake Forest, IL 60045

---

Registration Form  
AEG North Central Section Short Course  
New World in Geophysics  
May 18-19, 2010

1. Tuition Fees/Donations:

- \$\_\_\_\_\_ Corporate Sponsor\*\* (Platinum Level \$1000, Gold Level \$500)  
\$\_\_\_\_\_ AEG Members (\$350)  
\$\_\_\_\_\_ Professional (Early Registration\* \$350, Other \$450)  
\$\_\_\_\_\_ Student (Early Registration\* \$100, Other \$125)  
\$\_\_\_\_\_ Continuing Education Credit Certificate (2.0 hours - \$5)  
\$\_\_\_\_\_ New AEG Member (\$75 for new member dues plus \$275 for Tuition = \$350 total)  
\$\_\_\_\_\_ Total

\*\*Corporate Sponsorships are also available. Sponsor contributions will be used to cover the costs of the course and for activities for Geo-science Students in the North Central Section area. Your sponsorship will be recognized in future course advertisements, the AEG Newsletter, at an AEG Section Meeting, and on course materials. In appreciation of your donation, tuition fees are waived for Corporate Sponsors under the following schedule; Platinum Sponsors - up to 4 short course attendees, Gold Sponsors up to 2 short course attendees.

\*We have extended the due date for Early Registration. Please mail your registration forms by January 31, 2010 to receive the discounted early registration fee.

2. Please complete for each registrant:

Name: \_\_\_\_\_

Position: \_\_\_\_\_

Company/Firm: \_\_\_\_\_

Address: \_\_\_\_\_

City: \_\_\_\_\_ State: \_\_\_\_\_ Zip: \_\_\_\_\_

Phone Number: \_\_\_\_\_

Email Address: \_\_\_\_\_



\_\_\_\_\_ I need special accommodations. Please contact me.

---

For further information on the benefits of AEG Membership, please go to <http://www.aegweb.org>

**Chapter Meetings**

**Inland Empire:**

For the latest information and updates, please visit <http://www.aegsc.org/chapters/inlandempire/>

**Central Coast:**

For the latest information and updates, please visit <http://www.aegsc.org/chapters/centralcoast/>

**San Diego:**

For the latest information and updates, please visit <http://www.aegsc.org/chapters/extremesocal/>

**National Business Donation**

- **Platinum** - \$1,000
- **Gold** - \$500
- **Silver** - \$250

Company name, address and contact information are presented in AEG News and section receives 10% of donation. A national donation does not yield a line in our local section newsletter.

**Company & Employment Advertising  
Newsletter (includes SoCal website posting)**

	<u>Month</u>	<u>Year</u>
▪ Business Card	\$10	\$100
▪ ¼ Page	\$20	\$200
▪ ⅓ Page	\$30	\$300
▪ ½ Page	\$35	\$350
▪ Full Page	\$50	\$500

**SoCal website posting only**

**\$20/month**

AEG offers two ways to increase your company's visibility for under \$100 per year. Each *Annual Report and Directory* and each issue of *Environmental & Engineering Geoscience* includes the Professional Index. Available only to AEG members, this is a great way to promote your company. For \$80 per year, you can be included in both the Directory and Journal.

Many of our members use this index to find colleagues to assist with projects or to recommend their services to others. Don't miss your chance to be included in the *2010 Annual Report and Directory*. Reservations are due by December 31 to secure your listing.

Pricing is:

\$30 – *Annual Report and Directory*

\$60 – *Environmental & Engineering Geoscience*

\$80 – Both publications

You can order online at

<https://aegweb.org/i4a/forms/form.cfm?id=23&pageid=4837&showTitle=1>

or call Cathy Wilson at 303-757-2926.

\* The deadline for submitting an advertisement for next month's newsletter is February 26.

### **YEAR 2010 CONTRIBUTORS NEEDED**

Contributions from corporations and individual members are greatly appreciated. Contributors will be listed in our newsletter throughout the year and can post their logo or business card in the newsletter if so desired. Please mail contributions made out to **AEG** to our section treasurer, Dave Perry.

### **2010 MEMBERSHIP RENEWAL**

For those of you who have not yet renewed **(the deadline was November 1)**, are unsure about your membership status, or did not receive your membership dues statement, please contact AEG Headquarters at [www.aegweb.org](http://www.aegweb.org). You can renew your membership online. Please update your membership if you wish to continue to receive future issues of the newsletter.

**\*\*\*NOTICE: Proposed New AEG Publication\*\*\***

**WHO'S WHO in SO CALIFORNIA ENGINEERING GEOLOGY**  
**The Evolution of Engineering Geology in Southern California**

Have you ever wondered "Whatever happened to\_\_\_?" or "I've heard of \_\_\_, who is he?"

The undersigned have decided to try to prepare an internet publication with the above title, which will include biographies of engineering geologists in southern California. We would like you to share your biography (autobiography) with other EGs. If you have worked on an interesting project, others would like to know about it.

If we limit each autobiography to 3 pages of text, plus photos, this publication would be more than 1,000 pages long. Therefore, we plan to utilize a proposed new AEG Foundation internet website, where there is no limit to total pages, and we can use color photos. Also, this new website will be available for no-charge access, worldwide, thus spreading the word on the history and evolution of engineering geology, and southern California's immense contribution.

We suggest (not require) three criteria for inclusion: 1. That you are a CA licensed CEG; 2. That you are now or once were a member of AEG; 3. That you have enough years of professional experience to relate one or more significant projects you have worked on. We believe there are more than 250 such EGs in southern California. This will be an evolving internet site where new autobiographies can be added.

We will also include Memorial biographies of past notable geologists in southern California. So far, we have identified 30, including John Buwalda, Ian Campbell, Tom Dibblee, Rollin Eckis, Perry Ehlig, Richard Jahns, John Mann, F.L. Ransome, Charles Richter, Dottie & Marty Stout, Gene Waggoner. Biographies of 14 of these notable geologists were published for the recent AEG Annual Meeting, in "History of the Association's First 50 Years," available from AEG HQ, contact Julie Keaton or Becky Roland.

Here is a CHECKLIST FOR YOUR AUTOBIOGRAPHY:

Complete NAME, address, phone, email; BIRTH DATE and place; UNIVERSITY(s) attended, major(s), degree(s), year(s); MILITARY service; FIRMS/AGENCIES you worked for; up to 3 significant PROJECTS you worked on; possibly relate a serious or humorous INCIDENT; a MENTOR you may wish to acknowledge; professional SOCIETIES, HONORS, AWARDS; HOBBIES; up to 5 PUBLICATIONS; PHOTOS of yourself and of projects (scanned images preferred).

So, if you wish to be included in this new internet publication, prepare your autobiography and email it with photos to: allen@hatheway.net and in the Subject box, type: So. Cal. Geologist. Or mail it to Allen Hatheway, 10256 Stoltz Dr., Rolla, MO 65401. Please, no more than 3 pages of text, single-spaced, Times New Roman, 12 pt.

Please pass this notice on to those you may know who no longer get this Newsletter.

In the spirit of camaraderie, we thank you,

Richard Proctor  
 Allen Hatheway  
 David Rogers  
 Larry Cann  
 Bob Lynn

## EMPLOYMENT OPPORTUNITIES & ADVERTISING

### **The California Geological Survey is hiring engineering geologists.**


CGS needs to recruit and hire new engineering geologists to maintain staffing levels as staff retires or moves on. This may not be the obvious time to look for a job with the state, but CGS gets most of its funding through special funds and contracts, not the general fund. When CGS needs to hire, an announcement is posted on the State Personnel Board's "VPOS" web site ( <http://jobs.spb.ca.gov/wvpos> ). Searching for "Engineering Geologist" there will find the positions that the State is now accepting applications for. Those currently include a position in CGS's Geologic Mapping Program. That position is listed as within the Department of Conservation. See the web page for the full job description and application instructions. Please note that to be hired by the state, a candidate must pass and place in the highest three ranks on a civil service exam. The Engineering Geologist exam, jointly developed by the Department of Conservation and the Department of Water Resources, is an online qualifications appraisal. It is possible to take the exam at the same time you send in an application, but both steps are required. The online application and "supplemental questionnaire" (exam) are at this web page.

<http://jobs.ca.gov/CASPB/sup/BulPreview.asp?R1=095699&R2=00103756&R3=9PB02>

[http://jobs.spb.ca.gov/wvpos/more\\_info.cfm?recno=415797](http://jobs.spb.ca.gov/wvpos/more_info.cfm?recno=415797)

Chris Wills  
Supervising Engineering Geologist  
California Geological Survey  
801 K St. MS 12-32  
Sacramento, CA 95814-3531

It's a scale...  
It's a protractor...  
It's the fastest apparent dip calculator!

The logo for ZIP A DIP features the text "ZIP A DIP" in a bold, sans-serif font. The letter "A" is replaced by a stylized triangle with a horizontal line through it, resembling a dip symbol. The logo is flanked by two sets of three horizontal lines, suggesting a scale or protractor. Below the main text, it says "an Underground Insight product".

Now available online at [ZipADip.com](http://ZipADip.com)

If you would like to post an ad in the newsletter, please contact Shant Minas at [shant@aessoil.com](mailto:shant@aessoil.com). Advertisement rates are shown in the box below.

<b>Company &amp; Employment Advertising <i>Newsletter (includes SoCal website posting)</i></b>		
	<u>Month</u>	<u>Year</u>
▪ Business Card	\$10	\$100
▪ 1/4 Page	\$20	\$200
▪ 1/3 Page	\$30	\$300
▪ 1/2 Page	\$35	\$350
▪ Full Page	\$50	\$500
<b><u>SoCal website posting only</u></b>		
<b>\$20/month</b>		

Shant Minas  
Applied Earth Sciences  
4742 San Fernando Road  
Glendale, CA 91204  
818-552-6000 x109  
shant@aessoil.com