

ASSOCIATION OF ENVIRONMENTAL & ENGINEERING GEOLOGISTS
Southern California Section
"Connecting Professionals, Practice, and the Public."

NEWSLETTER – September 2008

Officers

Chair - Rosalind Munro, rmunro@mactec.com, 323-889-5366
Vice Chair - Mark Osborne, mark.osborne@lacity.org, 213-847-0524
Treasurer - Peter Thams, thams.peter@gmail.com, 805-493-0663
Secretary - Jon Relyea, jon@radiusmaps.net, 800-554-3205

Visit the Southern California Section Website: www.aegsc.org

Newsletter Editor – Steve Varnell, svarnell@fugro.com, 805-650-7000

No Dinner Meeting This Month...

**See you in New Orleans, LA
for the Annual Meeting,
September 15-20, 2008!**



| |
|---------------------|
| Chair Column |
|---------------------|

Roz Munro

NEW ORLEANS

The 51st Annual Meeting in New Orleans is upon us. In case anyone is concerned about the effects of Gustav, here is a report from Becky regarding the impact on the hotel sent on Tues. Sept. 2.

“As many of us stayed glued to the news stations over the weekend, we all breathed a sigh of relief as Hurricane Gustav weakened and moved west of New Orleans. We are pleased to note that the JW Marriott, our headquarters hotel for the Annual Meeting, was one of only two hotels in New Orleans that stayed open throughout the storm and provided a very comfortable home for the news stations to coordinate their broadcasts. The hotel lost power for only four hours on Sunday, and is preparing to share their southern hospitality with attendees at our Annual Meeting in a few weeks. The hotel is located across the street from the French Quarter, and even when Hurricane Katrina hit three years ago, the hotel had only one broken window. All to say that we are looking forward to a terrific Annual Meeting.

With Gustav now moving on, you may wish to sign up for the Hurricane Katrina Field Trip or the Geology of the Louisiana Coastal Zone Field Trip as each will provide views of areas recently affected by the storm.

We will wait for the outer area damage to be assessed and see if there is a way that attendees can assist in the recovery efforts while at the meeting or after. “

New Orleans is a great city and I'm not talking about Bourbon Street. There are museums, galleries, beautiful homes in the Garden District, and so much more. I have been there numerous times in the decades before Katrina. I was also there a year and a half after Katrina. While I was there, we were repeatedly thanked for coming and supporting New Orleans recovery. Much of the city and surrounding areas had not shown much recovery, however.

So support New Orleans and the 2008 Annual Meeting. It's not too late to register. I look forward to seeing everyone there.

SECTION

Election for Section Officers

We need to nominate officers for the Southern California Section this month.

The current proposed nominees are Peter Thams for Chair, Mark Osborne for Vice Chair, and Jon Relyea for Treasurer.

We need a nominee for Secretary. Please consider supporting the section by volunteering or recommending a candidate.

| |
|---|
| August 22, 2008 BGG Meeting Update |
|---|

Joe Cota

The Board for Geologists and Geophysicists (BGG) did not meet at its usual Sacramento meeting place- Department of Consumer Affairs (DCA) building on North Market Blvd.-for an interesting reason. Apparently, BGG Staff felt, based on a phone call from an “ex employee” that there could be a security risk over issues to be discussed. I was told that staff had requested security guards for this meeting, but instead, the meeting was moved to the Department of Justice 19th Floor Conference Room on J Street. There was decidedly higher security than previous BGG meetings.

All of the Board Members, except for Richard Blake and Shayan Samii were present (quorum present). Two BGG staff members, plus George Dunfield, BGG’s Enforcement Officer, and DCA Attorneys Gary Duke and Michael Santiago were also present. Ms. Cynthia Rust, a DCA accountant was present, as well as Tom Crosby, Chair of the Professional Affairs Advisory Committee (PAAC; previously known as the Technical Advisory Committee, or TAC). Aside from the BGG Staff and Board members, DCA Attorneys and finance person, and the PAAC Chair, there were no public members present except for AEG So. Cal Section’s Legislative Affairs Chair. The other two California AEG sections were not represented at the meeting.

At the Public Forum (previously Public Comment Period), I acknowledged that AEG So Cal Section was generally supportive with the positive changes in the Board’s operations under the new Executive Director and that we continue to work through our lobbyist Judy Wolen for common goals. I also assured them that AEG sections have written letters of support for Board-sponsored bills such as AB 1284.

BGG Chair Black and Cecilia Yu gave legislative updates on the following bills:

AB 1284 (Sponsored by BGG)- passed senate 28-8. A summary of the bill is as follows:

This bill would delete the exemption from the written examination for any person with an equivalent certificate of registration. The bill would also require each applicant for registration to pay an examination fee fixed by the board at an amount, up to \$450, equal to the actual cost to the board to administer the written examination.

AB 1869- status- BGG position “Watch”- present status is this bill has died in committee.

SB 963- A bill that affects the sunset dates of various boards. Status- BGG has successfully worked out the language such that this bill no longer affects the next BGG sunset committee review date one way or the other.

For anyone interested in reviewing the texts of these or any other California Assembly and Senate bills, you may review them on the State’s website at: <http://www.leginfo.ca.gov/>

Board Member James Ashby is the DCA liaison for BGG and had no new news in that department. His major concern for the day, at least in terms of vocal expression, seemed to be getting his hands on some BGG business cards with his name on them.

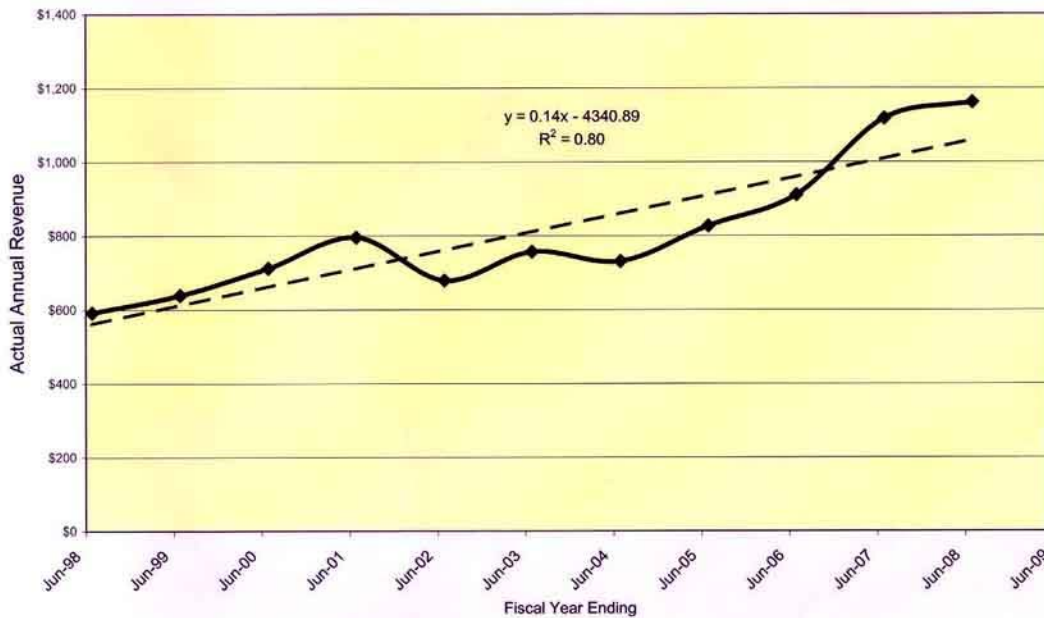
The Exam committee is working on the California Specific Exam (CSE). Over a year ago, AEG So. Cal Section suggested to BGG that instead of elimination of the CSE as past Executive Director Paul Sweeney attempted to do, the CSE be changed from trivial questions to questions addressing legal

issues and maps which are state-specific to California such as AP Earthquake Zone Maps, Seismic Hazards Zone maps for liquefaction and seismic slope stability, local agency requirements for geotechnical reports, etc. Board President Wm Black indicated that the exam committee has made great progress in this area and that the CSE is more focused on laws governing the practice of geology and less “geo-trivia”. The geophysicist exam presently has about 150 base questions and BGG is looking for more, so if you have potential exam questions, send them in. The number of persons applying to take the geophysicist exam is down and BGG is looking to make this exam available twice per year in an attempt to increase the numbers of geophysicists.

The Professional Affairs Advisory Committee represented by Chair Tom Crosby essentially indicated they are looking for a project to do, so last meeting they changed their name from TAC to PAAC (as noted above) and have offered to assist the Exam Committee.

Cynthia Rust, a DCA accountant, gave an interesting discussion on BGG finances. She presented a chart which shows the BGG’s total revenue consistently climbing from \$600,000.00 in 1998 to nearly \$1.2 million in 2008. If memory serves me, BGG revenue in 1994 was around \$300,000.00. According to another spreadsheet handout, the salaries and wages of the BGG Staff are \$432,646.00 plus an additional \$169,338.00 in staff benefits (i.e. medical, vacation, life insurance, retirement, etc.). Thus, about one-half of the annual revenue goes to staff wages and benefits. The remainder is applied to BGG operating expenses, office equipment, enforcement actions, etc. In summary, the BGG budget is about balanced with a small surplus (which I think goes back into the General Fund at the end of the year) with a 14% annual revenue growth (increase) over time. The DCA like to see all Boards maintain 3 to 6 months reserve funding.

Trend Indicating >10% Annual Revenue Growth 1998-2008



Following the discussion on BGG economics, the Board held the longest “closed session” that I have personally seen. This closed session, including a lunch break was well over three hours in duration. The Agenda indicates that personal matters, an update on a Superior Court case (case no. 02CC17018) and applicant approval processes prior to Oct. 22, 2006 were discussed.

The closed session was followed by a short Professional Standards report by George Dunfield who indicated that the numbers of applicants for Geologist in Training (GIT) are increasing. The number of applicants for Geophysicists is down and we are losing approximately 14.4 geophysicists per year. The numbers of Professional Geologists (PG) is increasing by 86 to 87 per year and we did not get the numbers for CEG's.

The Board held elections of new officers near the end of the meeting. Rick Blake (in his absence!) was appointed President, and James Ashby was appointed Vice president. William Black reverts to regular Board member status. Regarding the previous mention of Ashby wanting his business cards so badly, he offered to write a personal check to cover the costs. While I applaud any volunteer who serves on the BGG, I must wonder why a private practice geologist needs BGG cards so urgently.

Because of the lengthy closed session, it was now time to catch the flight home and Board member Cecilia Yu also had to catch her plane. I gave her a ride back to the airport courtesy of AEG So. Cal Section's rental car and it gave me about 20 minutes to get to know Cecilia and to discuss AEG's involvement.

| |
|---------------------|
| Announcement |
|---------------------|

Charles Nestle

The 2008 County of Los Angeles Building Code (Title 26) was expected to be available in technical book stores around the end of March. The new code may also be accessed at either of the following links: <http://www.bpcnet.com/codes/lacounty/> or <http://ordlink.com/codes/lacounty/index.htm>. Click on: “Title 26. Building Code.”

| |
|------------------------------------|
| Public Service Announcement |
|------------------------------------|

Charles Nestle

ZIP-A-DIPS Are Still Available!

How many of you have given up trying to find replacement for your faded and warped Zip-A-Dips? Zip-A-Dips are available from Don and Jeannine Lamar, who have lived in retirement in Reno for the past six years. Jeannine said that they don't plan on having any more made when they exhaust the present supply of Zip-A-Dips. She said, “It sure is nice to know that some geologists are still using ZADs.”

Order your Zip-A-Dip by phone: (775) 322-5344. The price for 1 is \$4.00, or order 2-10 for \$3.50 ea., 11-49 for 3.00 ea., and 50+ for \$2.50 ea.

AEG Southern California Section's 3rd Annual Golf Outing to Benefit the Martin Stout Fund

The Southern California Section of AEG held their 3rd Annual Golf Outing at Tierra Rejada Golf Club in Moorpark on Friday, August 15, 2008. The event is held to benefit the Martin Stout Fund of the AEG Foundation. In keeping with tradition, the event was held at a course providing some geologic interest and member Scott Simmons of Gorian and Associates was on hand (with exhibits) to present findings of his work on the property to the group. In brief, the property is traversed by a potentially active trace of the Simi Santa Rosa Fault with attendant fault-related features such as landslides and unconformable contacts between geologic units. Thanks to Scott and Gorian and Associates for providing color!

This year's event was won by the two-man team of Mike Phipps and Shaun Simon of Geolabs-Westlake Village. Congratulations Mike and Shaun! Second Place was shared by the two-man teams of Paul Kim/Dave Benson and Martin Lieurance/Jeff Kofoed all of Grover-Hollingsworth, also located in Westlake Village. Well done Paul, Dave, Martin, and Jeff! Individual prizes were won for closest-to-the-pin by Lee Gonrab (non-member associate of Earth Resources) inching out Donnallee Simmons of team Gorian on Hole #2, Jon Relyea of Earth Resources on Hole #14, and Martin Lieurance of Grover-Hollingsworth with a spectacular shot on Hole #17. Mike "Big Dog" Phipps out-distanced all to win longest drive on Hole #16. Congratulations to all on their individual performances!

As in previous years, the event was a financial success as well as a fun outing and the Section will be donating all proceeds to the Martin Stout Fund. Special thanks to Buzz Spellman as the official photographer for the event, and to Shaun Simon for keeping statistics. Honorable mention to Lee Gonrab for returning his individual prize as a donation to the fund in the spirit of the event.



Overall Winners Shaun Simon and Mike Phipps



Treasurer Peter Thams with Martin Lieurance



The Grover-Hollingsworth contingent



Hole #8

**GEOTECHNICAL GROUP
LOS ANGELES SECTION - ASCE**

MEETING NOTICE

Wednesday, September 17, 2008

**SOME EXAMPLES OF THE EFFECTS OF ROCK TOPPLING ON
HYDROELECTRIC WORKS AND FOUNDATION SLOPES**

Richard E. Goodman, Ph.D.

Emeritus Professor of Geological Engineering
University of California, Berkeley

ABSTRACT

Toppling failure entails the flexure and collapse of overhanging layers or ledges of rock. The term also embraces failure of rock layers by bending partly as a result of water pressures, soil creep, or structural forces. After a brief introduction to the kinematics and mechanics of toppling, and their analysis, examples of repairs will be presented. The cases to be discussed include two powerhouses, three penstock slopes, a tunnel, and a neighborhood of good homes founded on shale.

SHORT BIO

Dr. Richard E. Goodman has been Emeritus Professor of Geological Engineering of the University of California, Berkeley, since 1994, having taught at the university for over 30 years. He is a world-renowned expert in geological engineering and rock mechanics. He has authored four books and co-authored one, including the highly-acclaimed *Karl Terzaghi - The Engineer as Artist* (1999). He has won numerous awards and honors, including being the Rankine Lecturer in 1995 and receiving several awards from ASCE: the Archie Carter Award for authoring *Karl Terzaghi, The Engineer as Artist*, judged to be the best publication by ASCE in 1999; the Civil Engineering History and Heritage Award in 2000 for authorship of *Karl Terzaghi, The Engineer as Artist*, and the H. Bolton Seed Medal in 2000.

| | |
|---------------|---|
| SOCIAL HOUR: | 5:30 p.m. |
| DINNER: | 6:30 p.m. |
| PROGRAM: | 7:30 p.m. |
| PLACE: | Stevens Steak House 5332 Stevens Place, City of Commerce Southwest Corner of I-5 & Atlantic Boulevard |
| PRICE: | \$30 with reservation (Free with valid Student ID) \$35 at the door |
| RESERVATIONS: | Scott J. Brandenburg |
| By e-mail to | sjbrandenberg@ucla.edu |

**Please make reservations by e-mail prior to:
12 noon, Friday, September 12, 2008**



AEG•2008

Laissez Les Bon Temps Rouler (Let the Good Times Roll!)

New Orleans, Louisiana

September 15-20, 2008 ~ JW Marriott Hotel

CALL FOR PAPERS
ABSTRACTS DEADLINE:
MAY 1, 2008
PLEASE SEND TO JULIE KEATON
E-mail: aegjuliek@aol.com
Or see www.aegweb.org

Technical Program

- Coastal/Floodplain Processes
- Construction Geology
- Dams/Levees
- Environmental Geology
- Forensic Geology
- Geophysics
- Geotechnics
- Groundwater
- Landslides/Slope Stability
- Professional Practice
- Remote Sensing/GIS
- Rock/Soil Mechanics
- Seismic Hazard
- Site Characterization
- Subsidence
- Tunneling

Symposia

- Hurricane Katrina and Mechanism of Failure
- New Madrid Earthquakes
- Coastal Geology and Coastal Hazards
- Environmental Remediation
- Coastal Protection – New Orleans
- Tunneling

Field Trips

- Slope Stability – Mississippi River Bluffs
- Hurricane Katrina Devastation Area
- Avery Island Salt Dome & Tabasco Tour
- Civil War Military Geology – Vicksburg Campaign
- Coastal Geology – Barrier Islands
- NASA – Stennis Space Center

Short Courses

- GIS
- OSHA 8-hour HAZWOPR Refresher
- Technical Photography

General Chairs: James May (jmay1942@bellsouth.net)
 Darrel Schmitz (schmitz@ra.msstate.edu)
Field Trips: Michael J. Wright (mwright@mdot.state.ms.us)
Field Trip Guidebook Editors:
 Joel S. Kuszmaul (kuszmaul@olemiss.edu)
 Robert M. Holt (mholt@olemiss.edu)
Finance: Darrel Schmitz (schmitz@ra.msstate.edu)
 Colin McAneny (mcanenyd@bellsouth.net)
Hospitality / Guest Affairs:
 Peggi May (jmay1942@bellsouth.net)

Special Event

Mardi Gras Parade and Reception through the French Quarter – with the procession led by a traditional N'awlins jazz group.

COMMITTEE CHAIRS

Local Liaisons:
 Tom Westbrook (tmwklf@bellsouth.net)
 Burton Kemp (kaims@bellsouth.net)
Moderators / Keynote Speaker:
 Mike Seal (michael.c.seal@usace.army.mil)
Outstanding Environmental & Engineering Geologic Project:
 Evelyn Villanueva (Evelyn.Villanueva@erdc.usace.army.mil)
 Publicity: Jay Ferris (jferris@earthcon.net)

Guest Tours

- Good Morning New Orleans Walking Tour
- River Road Journey – Antebellum Life
- Garden District Tour with Lunch at Commander's Palace
- Honey Island Swamp – Eco Tour

Short Courses: Chris Saucier (csaucier@cee.msstate.edu)
Special Event: Donna Schmitz (donna@ext.msstate.edu)
Sponsors: Ken Ruckstuhl (kruckstuhl@env-mgt.com)
Student Coordination: Greg Easson (geasson@olemiss.edu)
Symposia:
 Wayne Ispording (wisphord@jaguar1.usouthal.edu)
Technical Program:
 Dave Patrick (david_patrick@comcast.net)
 Don Banks, Vice Chair, donbanks@canuffy.net
Meetings Manager / Registration and Exhibitors:
 Julie C. Keaton (aegjuliek@aol.com)

Chapter Meetings

Inland Empire:

For the latest information and updates, please visit <http://www.aegsc.org/chapters/inlandempire/>

Central Coast:

Monthly meetings will take place on the last Wednesday of every month at Rusty's Pizza in Goleta. Social hour begins at 6 pm, the meeting begins at 7pm.

For the latest information and updates, please visit <http://www.aegsc.org/chapters/centralcoast/>

For more information or to be added to the CA Central Coast Chapter email list, please contact Robert Urban via email at robert_urban@urscorp.com.

San Diego:

For the latest information and updates, please visit <http://www.aegsc.org/chapters/extremesocal/>

National Business Donation

- **Platinum** - \$1,000
- **Gold** - \$500
- **Silver** - \$250

Company name, address and contact information are presented in AEG News and section receives 10% of donation. A national donation does not yield a line in our local section newsletter.

Company & Employment Advertising Newsletter (includes SoCal website posting)

| | <u>Month</u> | <u>Year</u> |
|-----------------|--------------|-------------|
| ▪ Business Card | \$10 | \$100 |
| ▪ ¼ Page | \$20 | \$200 |
| ▪ ⅓ Page | \$30 | \$300 |
| ▪ ½ Page | \$35 | \$350 |
| ▪ Full Page | \$50 | \$500 |

SoCal website posting only

\$20/month

* The deadline for submitting an advertisement for next month's newsletter is Friday, September 26th, 2008.

YEAR 2008 CONTRIBUTORS NEEDED

Contributions from corporations and individual members are greatly appreciated. Contributors will be listed in our newsletter throughout the year and can post their logo or business card in the newsletter if so desired. Please mail contributions made out to **AEG** to our section treasurer, Peter Thams.

2009 MEMBERSHIP RENEWAL

For those of you who have not yet renewed (**the deadline is November 1**), are unsure about your membership status, or did not receive your membership dues statement, please contact AEG Headquarters at www.aegweb.org. You can renew your membership online. Please update your membership if you wish to continue to receive future issues of the newsletter.

*****NOTICE: Proposed New AEG Publication*****

**WHO'S WHO in SO CALIFORNIA ENGINEERING GEOLOGY
The Evolution of Engineering Geology in Southern California**

Have you ever wondered "Whatever happened to___?" or "I've heard of ___, who is he?"

The undersigned have decided to try to prepare an internet publication with the above title, which will include biographies of engineering geologists in southern California. We would like you to share your biography (autobiography) with other EGs. If you have worked on an interesting project, others would like to know about it.

If we limit each autobiography to 3 pages of text, plus photos, this publication would be more than 1,000 pages long. Therefore, we plan to utilize a proposed new AEG Foundation internet website, where there is no limit to total pages, and we can use color photos. Also, this new website will be available for no-charge access, worldwide, thus spreading the word on the history and evolution of engineering geology, and southern California's immense contribution.

We suggest (not require) three criteria for inclusion: 1. That you are a CA licensed CEG; 2. That you are now or once were a member of AEG; 3. That you have enough years of professional experience to relate one or more significant projects you have worked on. We believe there are more than 250 such EGs in southern California. This will be an evolving internet site where new autobiographies can be added.

We will also include Memorial biographies of past notable geologists in southern California. So far, we have identified 30, including John Buwalda, Ian Campbell, Tom Dibblee, Rollin Eckis, Perry Ehlig, Richard Jahns, John Mann, F.L. Ransome, Charles Richter, Dottie & Marty Stout, Gene Waggoner. Biographies of 14 of these notable geologists were published for the recent AEG Annual Meeting, in "History of the Association's First 50 Years," available from AEG HQ, contact Julie Keaton or Becky Roland.

Here is a CHECKLIST FOR YOUR AUTOBIOGRAPHY:

Complete NAME, address, phone, email; BIRTH DATE and place; UNIVERSITY(s) attended, major(s), degree(s), year(s); MILITARY service; FIRMS/AGENCIES you worked for; up to 3 significant PROJECTS you worked on; possibly relate a serious or humorous INCIDENT; a MENTOR you may wish to acknowledge; professional SOCIETIES, HONORS, AWARDS; HOBBIES; up to 5 PUBLICATIONS; PHOTOS of yourself and of projects (scanned images preferred).

So, if you wish to be included in this new internet publication, prepare your autobiography and email it with photos to: allen@hatheway.net and in the Subject box, type: So. Cal. Geologist. Or mail it to Allen Hatheway, 10256 Stoltz Dr., Rolla, MO 65401. Please, no more than 3 pages of text, single-spaced, Times New Roman, 12 pt.

Please pass this notice on to those you may know who no longer get this Newsletter.

In the spirit of camaraderie, we thank you,

Richard Proctor
Allen Hatheway
David Rogers
Larry Cann
Bob Lynn

EMPLOYMENT OPPORTUNITIES & ADVERTISING



LGC Valley, Inc.

LGC Valley, Inc.

2045 Royal Avenue, Ste. 125
Simi Valley, CA 93065
Tele: (805) 579-3434 Fax: (805) 579-3435
Email: kesmond@lgcgeo.com

Website: www.lgcgeo.com

Please look to our website for the latest opportunities. All inquiries will be held in the utmost confidence. We look forward to hearing from you.

Immediate Opening for Groundwater Geologist

Entry level to a few years of experience;
Minimum need is BA/BS in Geology;
Field & office work on water wells and groundwater resources; local office in Studio City, CA;
Computer skills required, including Microsoft office (Excel, Word), MapInfo and GIS experience desired.

Please contact:

Richard Slade
Richard C. Slade & Associates LLC
Consulting Groundwater Geologists
(818) 506-0418
or email resume to:
b.georgeson@rcslade.com



COUNTY OF LOS ANGELES
DEPARTMENT OF PUBLIC WORKS
JOB OPPORTUNITY



POSTING DATE: August 4, 2008

| | |
|-------------------------|---|
| EXAM NUMBER C-4362-G | ENGINEERING GEOLOGY ASSISTANT |
| FILING DATES | Beginning Tuesday, August 5, 2008, between 7:00 a.m. and 5:30 p.m. This examination will remain open until the needs of the service are met and may be closed at any time without advanced notice. |
| SALARY | \$4,868.00 - \$6,047.55 Monthly \$5,014.18 - \$6,229.18 Monthly (Effective 01/01/09) |
| REQUIREMENTS | Minimum Requirements: Graduation from an accredited college* with specialization in geology or engineering geology. License: A valid California Class C Driver License is required to perform job-related essential functions. Appointees may be required to provide automobiles and drive them in the County service at the rate of compensation allowed by the Board of Supervisors. Physical Class III – Moderate: Includes standing or walking most of the time, with bending, stooping, squatting, twisting, and reaching; includes working on irregular surfaces, occasionally lifting objects weighing over 25 pounds, and frequent lifting of 10-25 pounds. |
| ADDITIONAL REQUIREMENTS | *Accredited Institutions are those listed in the publications of regional, national or international accrediting agencies which are accepted by the Department of Human Resources. Publications such as <u>American Universities and Colleges</u> and <u>International Handbook of Universities</u> are acceptable references. Also acceptable, if appropriate, are degrees that have been evaluated and deemed to be equivalent to degrees from United States accredited institutions by an academic credential evaluation agency recognized by <u>The National Association of Credential Evaluation Services</u> or <u>Association of International Credential Evaluators, Inc.</u> APPLICANTS MUST PROVIDE A COPY OF THEIR COLLEGE TRANSCRIPTS AT TIME OF FILING. Unofficial transcripts are acceptable. Applications submitted without required transcripts will be rejected as incomplete. License Information: Successful applicants for this position will be required to obtain a copy of his/her driving record from the California State Department of Motor Vehicles before being appointed. A copy of your driving record must be presented at the time of your appointment. License must not be suspended, restricted, or revoked. AN APPLICANT WHOSE DRIVING RECORD SHOWS FOUR OR MORE MOVING VIOLATIONS WITHIN THE LAST TWO YEARS WILL NOT BE APPOINTED. |
| EXAMINATION INFORMATION | This examination will consist of an interview covering education, experience, personal fitness and general ability to perform the duties of the position weighted 100%. Candidates must achieve a passing score of 70% or higher on the interview in order to be placed on the eligible register. |
| ELIGIBLE INFORMATION | The names of eligible candidates receiving a passing grade in the examination will be placed on the eligible register in the order of their score group and, unless appointed, for a period of twelve months following the date of eligibility. NO PERSON MAY COMPETE IN THIS EXAMINATION MORE THAN ONCE EVERY TWELVE MONTHS. |
| VACANCY INFORMATION | The resulting eligible register for this examination will be used to fill vacancies in the Department of Public Works, Geotechnical and Materials Engineering Division. |
| ESSENTIAL JOB FUNCTIONS | An Engineering Geology Assistant is responsible for performing a combination of the following essential job functions: assists in conducting engineering geological investigations and Phase I/II environmental site assessments; reviews existing geologic and environmental literature to determine potential geologic and environmental concerns affecting a project site; provides geologic logging of 24" diameter boreholes, hollow-stem auger borings and backhoe trenches; operates and maintains electronic equipment used in geologic investigations and environmental assessments; provides field mapping for preparation of geologic maps and cross sections; interprets data observed from stereo pairs of aerial photographs; conducts inspections of construction projects to verify anticipated conditions; conducts meetings, discussions, and other communications with consultants, engineers, etc.; determines rock type and engineering characteristics of field samples; evaluates and analyzes geologic and environmental data to develop conclusions and recommendations for construction projects; prepares all necessary equipment and supplies and performs groundwater monitoring at County facilities; and drives vehicles to and from work sites. |

*******IMPORTANT INFORMATION*******

Engineering Geology Assistant
Exam#: C-4362-G

Bulletin# 690-08-065

BENEFITS

Paid Sick Benefits, Retirement Plans, Paid Vacation & Holiday, and Health & Dental Plans. Forty-hour, four day (4/40) work week is standard for most assignments. Other assignments may be 9/80 or 5/40 schedules.

SUBMITTING YOUR APPLICATION

All applicants are required to submit a Standard County of Los Angeles Employment Application. **You have the option of filing your application either by Hard Copy submission - OR - Online (via electronic submission). Please select only one method to file your application.**

This examination will remain open until the needs of the service are met and is subject to closure without prior notice. Application filing may be suspended at any time without advanced notice.

Instructions for Filing Online: The Standard County of Los Angeles Employment Application for this examination may be completed online and submitted electronically beginning Tuesday, August 5, 2008. Applications electronically received after 5:30 p.m., PST on the last day of filing will not be accepted. **To apply online, click on the link below the filing address.**

https://easier.co.la.ca.us/easier/applicant/applicant_logon.cfm?exid=1282

Applicants, who apply Online, must either upload required documents as attachments during application submission or fax a photocopy of the required documents to (626) 979-5440 within five (5) business days of filing Online. Please include your Name, the Exam Number and the Exam Title on faxed documents.

Instructions for Hard Copy Submission: All applicants for County positions are required to submit a Standard County of Los Angeles Employment Application with an original signature and date; resumes cannot be accepted in lieu of applications, although resumes may be attached to applications. Standard County of Los Angeles Employment Applications are available at the Department of Public Works address listed below or can be found at <http://easier.co.la.ca.us/JobInfo/empapp.pdf>.

Applications **MUST** be submitted **ONLY** at the Department of Public Works, Human Resources Division, located at 900 South Fremont Avenue, Lobby Floor, Alhambra, CA 91803-1331, Monday through Thursday **ONLY**, between 7:00 a.m. and 5:30 p.m., beginning Tuesday, August 5, 2008. Please note this office is closed on Fridays.

COMPLETING YOUR APPLICATION

The acceptance of your application will depend on whether you have clearly shown that you meet the Minimum Requirements. Please be sure your application shows complete information, including dates for education and jobs held which relate to this position. In the space provided for education, include the names and addresses of schools attended, titles of courses completed, dates completed, and number of credits earned. For each job held, give the name and address of your employer, your job title, beginning and ending dates, description of work performed, and salary earned. All information supplied by applicants is subject to verification.

DISABILITY ACCOMMODATIONS

All positions are open to qualified men and women. Pursuant to the Americans with Disabilities Act of 1990, persons with disabilities who believe they need reasonable accommodation, or help in order to apply for a position, may contact the ADA coordinator at (626) 458-2136. **HEARING-IMPAIRED APPLICANTS WITH TDD EQUIPMENT** may leave typewritten messages at (626) 282-7829.

EMPLOYMENT ELIGIBILITY INFORMATION

Final appointment is contingent upon verification of U.S. Citizenship or the right to work in the United States. Immigration law requires that all persons hired after November 6, 1986 are required to present original documents to the County, **within three (3) business days** of hiring, which show satisfactory proof of: 1)identity and 2)U.S. employment eligibility.

AN EQUAL OPPORTUNITY EMPLOYER

It is the policy of the County of Los Angeles to provide equal employment opportunity for all qualified persons, regardless of race, religion, gender, national origin, age, sexual orientation or disability. All County of Los Angeles employees must successfully pass a medical examination prior to final appointment.

SOCIAL SECURITY ACT OF 2004

Section 419 (c) of Public Law 108-203, the Social Security Protection Act of 2004, requires State and local government employers to disclose the effect of the Windfall Elimination Provision and the Government Pension Offset Provision to employees hired on or after January 1, 2005, in jobs not covered by Social Security. The County of Los Angeles does not participate in the Social Security System. All newly hired County of Los Angeles employees must sign a statement (Form SSA-1945) prior to the start of employment indicating that they are aware of a possible reduction in their future Social Security benefit entitlement. For more information on Social Security and about each provision, you may visit the website www.socialsecurity.gov, or call toll free 1-800-772-1213. Persons who are deaf or hard of hearing may call the TTY number 1-800-325-0778 or contact a local Social Security office.

CHILD SUPPORT COMPLIANCE

In an effort to improve compliance with court-ordered child, family, and spousal support obligations, certain employment and identification information (e.g. name, address, Social Security Number, and data of hire) is regularly reported to the State Directory of New Hires which may assist in locating persons who owe these obligations. Family Code Section 17512 permits under certain circumstances for additional employment and identifying information to be requested. Applicants will not be disqualified from employment based on this information.

VETERAN'S PREFERENCE CREDIT

Veterans Preference Credit of 10 points will be added to the final passing grade in any open competitive examination if you are an honorably discharged veteran who served in the Armed Forces of the United States:

- a. During a declared war; or
- b. During the period April 28, 1952 through July 1, 1955; or
- c. For more than 180 consecutive days, other than for training, any part of which occurred after January 31, 1955, and before October 15, 1976; or
- d. In a campaign or expedition for which a campaign medal or expeditionary medal has been authorized and awarded.

This also applies to the spouse of such person who, while engaged in such service was wounded, disabled or crippled and thereby permanently prevented from engaging in any remunerative occupation, and also to the widow or widower of any such person who died or was killed while in such service. A DD214, Certificate of Discharge or Separation from Active Duty, or other official documents issued by the branch of service are required as verification of eligibility for Veterans preference. If you are unable to provide any documentation at the time of filing, the 10 points will be withheld until such time it is provided.

DEPARTMENTAL POLICY

In accordance with Departmental policy, no person may be appointed, promoted, reduced, transferred or reassigned to a division in which a close family member works, exceptions may be considered on a case by case basis based on unique or specialized employee skills. All applicants for employment and promotion to a position within this department shall be required to disclose the name(s) of any relative currently employed in the department prior to appointment.

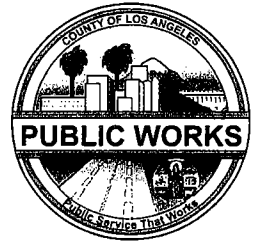
RECORD OF CONVICTIONS

A full disclosure of all convictions is required. Failure to disclose convictions will result in disqualification. Not all convictions constitute an automatic bar to employment. Factors such as your age at the time of the offense(s), and the recency of offense(s) will be taken into account, as well as the relationship between the offense(s) and the job(s) for which you apply. However, any applicant for County employment who has been convicted of workers' compensation fraud is automatically barred from employment with the County of Los Angeles (County Code Section 5.12.110). **ANY CONVICTIONS OR COURT RECORDS WHICH ARE EXEMPTED BY A VALID COURT ORDER DO NOT HAVE TO BE INCLUDED.**

MM



COUNTY OF LOS ANGELES
DEPARTMENT OF PUBLIC WORKS
JOB OPPORTUNITY



POSTING DATE: August 4, 2008

ENGINEERING GEOLOGIST

EXAM NUMBER
C-4371-L

FILING DATES

Beginning Tuesday, August 5, 20068 between 7:00 a.m. and 5:30 p.m. This examination will remain open until the needs of the service are met and may be closed at any time without advanced notice.

SALARY

\$7,168.36 - \$7,990.36 Monthly
\$7,383.82 - \$8,229.82 Monthly (Effective 01/01/09)

REQUIREMENTS

Minimum Requirements: California State Certificate of Registration as an Engineering Geologist.*

License: A valid California Class C Driver License or the ability to utilized alternative method of transportation when needed to carry out job-related essential functions.

Physical Class III – Moderate: Includes standing or walking most of the time, with bending, stooping, squatting, twisting, and reaching; includes working on irregular surfaces, occasionally lifting objects weighing over 25 pounds, and frequent lifting of 10-25 pounds.

ADDITIONAL
REQUIREMENTS

***INSTRUCTIONS FOR COMPLETING YOUR APPLICATION:** The acceptance of your application will depend on whether you have clearly shown that you meet the minimum requirements. In Section 11 of your application, be sure to give title of registration, number, issue date, date of expiration, and name of issuing agency.

****APPLICANTS MUST PROVIDE A COPY OF THEIR COLLEGE TRANSCRIPTS AT TIME OF FILING.** Unofficial transcripts are acceptable. Applications submitted without required transcripts will be rejected as incomplete.

Accredited Institutions are those listed in the publications of regional, national or international accrediting agencies which are accepted by the Department of Human Resources. Publications such as American Universities and Colleges and International Handbook of Universities are acceptable references. Also acceptable, if appropriate, are degrees that have been evaluated and deemed to be equivalent to degrees from United States accredited institutions by an academic credential evaluation agency recognized by The National Association of Credential Evaluation Services or Association of International Credential Evaluators, Inc.

License Information: Successful applicants for this position will be required to obtain a copy of his/her driving record from the California State Department of Motor Vehicles before being appointed. A copy of your driving record must be presented at the time of your appointment. License must not be suspended, restricted, or revoked. **AN APPLICANT WHOSE DRIVING RECORD SHOWS FOUR OR MORE MOVING VIOLATIONS WITHIN THE LAST TWO YEARS WILL NOT BE APPOINTED.**

EXAMINATION
INFORMATION

This examination will consist of an interview covering education and experience, personal fitness and general ability to perform the duties of the position weighted 100%. Candidates must achieve a passing score of 70% or higher on the interview in order to be placed on the eligible register.

ELIGIBLE
INFORMATION

The names of candidates receiving a passing grade in the examination will be placed on the eligible register and, unless appointed, will appear in the order of their score group for a period of twelve (12) months following the date of eligibility. **NO PERSON MAY COMPETE IN THIS EXAMINATION MORE THAN ONCE EVERY TWELVE (12) MONTHS.**

VACANCY
INFORMATION

The resulting eligible register for this examination will be used to fill vacancies in the Department of Public Works, Geotechnical & Materials Engineering Division.

ESSENTIAL JOB
FUNCTIONS

An Engineering Geologist is responsible for performing a combination of the following essential job functions: conducts engineering geological investigations and Phase I/II environmental site assessments (A Phase I Environmental Site Assessment (ESA) documents the presence of recognized environmental concerns in accordance with current standard practice and Federal regulations prior to the acquisition of property, right-of-way or easements by the County; A Phase II ESA documents the presence of subsurface contaminants, in accordance with current standard practice and government regulations through the use of drilling or other investigative method along with collection and analyses of soil and/or groundwater samples followed by evaluation and interpretation of data to form conclusions and recommendations); prepares geologic and environmental investigative reports; performs and evaluates hydrogeologic investigations; reviews, evaluates, and field checks plans for development projects; provides technical review of engineering geologic reports and Phase I/II environmental site assessments for development projects; conducts grading and construction inspections of projects to verify anticipated conditions; conducts meetings, discussions, and other communications with consultants, developers, engineers, etc.; determines the most appropriate exploratory techniques to use for a given project; prepares and analyzes cost estimates for geologic investigations and environmental site assessments; evaluates and analyzes geologic and environmental data to develop conclusions and recommendations for development projects; prepares bid specifications, evaluates bid responses and oversees geologic and environmental work performed on County projects by outside consultants; and drives vehicles to and from worksites.

*******IMPORTANT INFORMATION*******

Engineering Geologist
Exam#: C-4371-L

Bulletin# 690-08-066

BENEFITS

Paid Sick Benefits, Retirement Plans, Paid Vacation & Holiday, and Health & Dental Plans. Forty-hour, four day (4/40) work week is standard for most assignments. Other assignments may be 9/80 or 5/40 schedules.

SUBMITTING YOUR APPLICATION

All applicants are required to submit a Standard County of Los Angeles Employment Application. **You have the option of filing your application either by Hard Copy submission - OR - Online (via electronic submission). Please select only one method to file your application.**

This examination will remain open until the needs of the service are met and is subject to closure without prior notice. Application filing may be suspended at any time without advanced notice.

Instructions for Filing Online: The Standard County of Los Angeles Employment Application for this examination may be completed online and submitted electronically beginning Tuesday, August 5, 2008. Applications electronically received after 5:30 p.m., PST on the last day of filing will not be accepted. **To apply online, click on the link below the filing address.**

https://easier.co.la.ca.us/easier/applicant/applicant_logon.cfm?exid=1281

Applicants, who apply Online, must either upload required documents as attachments during application submission or fax a photocopy of the required documents to (626) 979-5440 within five (5) business days of filing Online. Please include your Name, the Exam Number and the Exam Title on faxed documents.

Instructions for Hard Copy Submission: All applicants for County positions are required to submit a Standard County of Los Angeles Employment Application with an original signature and date; resumes cannot be accepted in lieu of applications, although resumes may be attached to applications. Standard County of Los Angeles Employment Applications are available at the Department of Public Works address listed below or can be found at <http://easier.co.la.ca.us/JobInfo/empapp.pdf>.

Applications **MUST** be submitted **ONLY** at the Department of Public Works, Human Resources Division, located at 900 South Fremont Avenue, Lobby Floor, Alhambra, CA 91803-1331, Monday through Thursday **ONLY**, between 7:00 a.m. and 5:30 p.m., beginning Tuesday, August 5, 2008. Please note this office is closed on Fridays.

COMPLETING YOUR APPLICATION

The acceptance of your application will depend on whether you have clearly shown that you meet the Minimum Requirements. Please be sure your application shows complete information, including dates for education and jobs held which relate to this position. In the space provided for education, include the names and addresses of schools attended, titles of courses completed, dates completed, and number of credits earned. For each job held, give the name and address of your employer, your job title, beginning and ending dates, description of work performed, and salary earned. All information supplied by applicants is subject to verification.

DISABILITY ACCOMMODATIONS

All positions are open to qualified men and women. Pursuant to the Americans with Disabilities Act of 1990, persons with disabilities who believe they need reasonable accommodation, or help in order to apply for a position, may contact the ADA coordinator at (626) 458-2136. **HEARING-IMPAIRED APPLICANTS WITH TDD EQUIPMENT** may leave typewritten messages at (626) 282-7829.

EMPLOYMENT ELIGIBILITY INFORMATION

Final appointment is contingent upon verification of U.S. Citizenship or the right to work in the United States. Immigration law requires that all persons hired after November 6, 1986 are required to present original documents to the County, **within three (3) business days** of hiring, which show satisfactory proof of: 1) identity and 2) U.S. employment eligibility

AN EQUAL OPPORTUNITY EMPLOYER

It is the policy of the County of Los Angeles to provide equal employment opportunity for all qualified persons, regardless of race, religion, gender, national origin, age, sexual orientation or disability. All County of Los Angeles employees must successfully pass a medical examination prior to final appointment.

SOCIAL SECURITY ACT OF 2004

Section 419 (c) of Public Law 108-203, the Social Security Protection Act of 2004, requires State and local government employers to disclose the effect of the Windfall Elimination Provision and the Government Pension Offset Provision to employees hired on or after January 1, 2005, in jobs not covered by Social Security. The County of Los Angeles does not participate in the Social Security System. All newly hired County of Los Angeles employees must sign a statement (Form SSA-1945) prior to the start of employment indicating that they are aware of a possible reduction in their future Social Security benefit entitlement. For more information on Social Security and about each provision, you may visit the website www.socialsecurity.gov, or call toll free 1-800-772-1213. Persons who are deaf or hard of hearing may call the TTY number 1-800-325-0778 or contact a local Social Security office.

CHILD SUPPORT COMPLIANCE

In an effort to improve compliance with court-ordered child, family, and spousal support obligations, certain employment and identification information (e.g. name, address, Social Security Number, and data of hire) is regularly reported to the State Directory of New Hires which may assist in locating persons who owe these obligations. Family Code Section 17512 permits under certain circumstances for additional employment and identifying information to be requested. Applicants will not be disqualified from employment based on this information.

VETERAN'S PREFERENCE CREDIT

Veterans Preference Credit of 10 points will be added to the final passing grade in any open competitive examination if you are an honorably discharged veteran who served in the Armed Forces of the United States:

- a. During a declared war; or
- b. During the period April 28, 1952 through July 1, 1955; or
- c. For more than 180 consecutive days, other than for training, any part of which occurred after January 31, 1955, and before October 15, 1976; or
- d. In a campaign or expedition for which a campaign medal or expeditionary medal has been authorized and awarded.

This also applies to the spouse of such person who, while engaged in such service was wounded, disabled or crippled and thereby permanently prevented from engaging in any remunerative occupation, and also to the widow or widower of any such person who died or was killed while in such service. A DD214, Certificate of Discharge or Separation from Active Duty, or other official documents issued by the branch of service are required as verification of eligibility for Veterans preference. If you are unable to provide any documentation at the time of filing, the 10 points will be withheld until such time it is provided.

DEPARTMENTAL POLICY

In accordance with Departmental policy, no person may be appointed, promoted, reduced, transferred or reassigned to a division in which a close family member works, exceptions may be considered on a case by case basis based on unique or specialized employee skills. All applicants for employment and promotion to a position within this department shall be required to disclose the name(s) of any relative currently employed in the department prior to appointment.

RECORD OF CONVICTIONS

A full disclosure of all convictions is required. Failure to disclose convictions will result in disqualification. Not all convictions constitute an automatic bar to employment. Factors such as your age at the time of the offense(s), and the recency of offense(s) will be taken into account, as well as the relationship between the offense(s) and the job(s) for which you apply. However, any applicant for County employment who has been convicted of workers' compensation fraud is automatically barred from employment with the County of Los Angeles (County Code Section 5.12.110). **ANY CONVICTIONS OR COURT RECORDS WHICH ARE EXEMPTED BY A VALID COURT ORDER DO NOT HAVE TO BE INCLUDED.**

MM

JOIN NINYO & MOORE

Company Profile

Since 1986, clients have turned to Ninyo & Moore for complex geotechnical and environmental challenges. As a leading geotechnical and environmental sciences engineering and consulting firm, Ninyo & Moore provides specialized services including evaluations for airports, bridges, commercial developments, dams, educational facilities, harbor and offshore structures, highways and roadways, hospitals, industrial developments, landfills, light rail transit lines, pipelines, power stations, railroads, residential developments, reservoirs and tanks, transmission lines, tunnels, water and wastewater treatment plants to clients in both the public and private sectors. With offices in Colorado, California, Nevada, Arizona, and Texas, the firm is fully committed to being responsive, cost-efficient, and thorough in meeting its clients' project needs and objectives.



Available Positions:

- ✓ **CENTENNIAL:** Chief Geotechnical Engineer, Construction Field Technicians and Inspectors, Environmental Engineer/Scientist-Air Quality Specialist, Field Technician-Materials Testing, and Project Engineer/Geologist.
- ✓ **IRVINE:** Asbestos & Lead Professional, Environmental Engineer/Scientist-Air Quality Specialist, Environmental Project Manager, Project Engineer, Senior Environmental Engineer, Senior Staff Engineer/Geologist, Senior Staff Environmental Scientist, Staff Engineer/Geologist, and Staff Environmental Scientist.
- ✓ **LAS VEGAS:** Asbestos & Lead Professional, Construction Field Technicians & Inspectors, and Geotechnical Engineer.
- ✓ **OAKLAND:** Field Special Inspectors, Project Environmental Geologist, Scientist or Engineer, Project Geotechnical Engineer, Senior Environmental Engineer and Senior Geotechnical Engineer.
- ✓ **PHOENIX:** Construction Field & Laboratory Technician, Geotechnical Engineer/Engineering Geologist, Project Environmental Scientist, Project Manager-Construction Materials Testing, Senior Environmental Professionals, Senior Staff Environmental Scientist, and Technical Assistant.
- ✓ **SAN DIEGO:** Administrative Assistant, Construction Field & Laboratory Technicians, Project Engineer/Geologist, Senior Geotechnical Engineer, and Staff Engineer.



Successful candidates should have a BS or MS degree for staff-level positions and five years or more of experience for project to senior-level positions. The candidates should be detailed oriented and have excellent verbal and written communication skills. Professional Engineer (PE) and/or Professional Geologist (PG) registrations are preferred for project or senior positions.

Ninyo & Moore offers excellent benefits and great opportunities for professional growth. Please visit our website for complete and detailed job descriptions and to submit your resume in confidence at www.ninyoandmoore.com/careers.html or mail to our corporate office at 5710 Ruffin Road, San Diego, CA 92123, Attention: Human Resources. EOE

www.ninyoandmoore.com

Ninyo & Moore is an equal opportunity employer.

Stephen Varnell, P.G.
Fugro West, Inc.
4820 McGrath St., Suite 100
Ventura, CA 93003
805-650-7000
svarnell@fugro.com